

DOCUMENT A

District Enrollment as of 05/31//2017

DISTRICT	Full Time Students	Shared Time Students	Full Time Students PTC 20 LLD	Shared Time Students PTC 20 LLD	Total Student Count
Avon	36				36
Belmar	100	13	1	1	115
Brielle	228	7	7		242
Lake Como	41	4	1		46
Manasquan	284	4	4	1	293
Sea Girt	36		1		37
Spring Lake	50		1		51
Spr Lk Hts	116	1	4	1	122
Employee Child	2				2
Parent Paid	2				2
Totals	895	29	19	3	946
				TOTAL MHS	946
				TOTAL MES	629
				TOTAL ENROLLMENT	1575

**MANASQUAN SCHOOL DISTRICT ATTENDANCE COMPARISON REPORT
2016-2017 school year**

HIGH SCHOOL	<u>ATTENDANCE PERCENTAGE</u>	<u>AVERAGE DAILY ENROLLMENT</u>	<u>AVERAGE DAILY ATTENDANCE</u>
May-16	93.45	940.48	878.88
May-17	93.40	928.78	867.48
ELEMENTARY SCHOOL			
May-16	96.789	647.75	621.85
May-17	96.822	627.864	605.455

**MANASQUAN SCHOOL DISTRICT FIRE DRILL REPORT
2016 - 2017 School Year**

HIGH SCHOOL

<u>DATE OF DRILL</u>	<u>TIME OF DRILL</u>	<u>LENGTH OF DRILL</u>	<u>COMMENTS</u>	<u>SECURITY DRILLS</u>
May 11	10:00 a.m.	7 minutes		Fire Drill
May 18	1:30 p.m.	20 minutes		Evacuation Drill
ELEMENTARY SCHOOL				
<u>DATE OF DRILL</u>	<u>TIME OF DRILL</u>	<u>LENGTH OF DRILL</u>	<u>COMMENTS</u>	<u>SECURITY DRILL</u>
May 11	1:15 p.m.	4 minutes		Fire Drill
May 19	9:25 a.m.	10 minutes		Lockdown Drill Interior Threat

SCHOOL BUS EMERGENCY EVACUATION DRILL REPORT

School Bus emergency evacuation drills shall be conducted twice each school year according to the New Jersey Administrative Code (NJAC 6A:27-11.2).

Emergency evacuation drills and safety education

- (a). School administrators shall organize and conduct emergency exit drills at least twice within the school year for all students who are transported to and from school.
1. All other students shall receive school bus evacuation instruction at least once within the school year.
- (b). The school bus driver and bus aide shall participate in the emergency exit drills.
- (c). Drills shall be conducted on school property and shall be supervised by the principal or person assigned to act in a supervisory capacity.
- (d). Drills shall be documented in the minutes of the local board of education at the first board meeting following the completion of the emergency exit drill. The minutes shall include, but are not limited to, the following:
1. Date of the drill;
 2. Time of day the drill was conducted;
 3. School name;
 4. Location of the drill;
 5. Route number(s) included in the drill; and
 6. Name of school principal, or person(s) assigned, who supervised the drill.

REPORT OF THE COMPLETION OF THE SCHOOL BUS EMERGENCY EVACUATION DRILL TO THE BOARD OF EDUCATION

Date of the school bus emergency evacuation drill:

6-1-2017

Time of day the drill was conducted:

7:00-7:30 AM

School Name:

MANASQUAN HIGH SCHOOL

Location of the Emergency Evacuation Drill:

FRONT DRIVEWAY

Route Number(s):

6515, 6516, 6517, 6518, 6519 + 6520

Name of the school principal/person(s) overseeing the drill:

RICHARD READ, ASST. PRIN.

TIM CLAYTON, SECURITY OFFICER

Other information relative to the emergency evacuation drill:

[Signature] 6-1-17

**Manasquan High School
2016-2017**

	SUSPENSIONS BY GRADE				TOTAL
	9	10	11	12	
OUT OF SCHOOL SUSPENSIONS:					
Under the Influence		1		3	4
Fighting	2		3	1	6
Theft			1		1
HIB		1	1		2
Damage to Property			1		1
Defiance/Profanity			1	1	2
Pulled Fire Alarm				1	1
E-Cigarette				1	1
Possession		1			1
IN-SCHOOL SUSPENSIONS:					
Disrespectful to Another Student			2		2
Fighting	1				1
Leaving School Grounds w/o Permission/Assembly			4	11	15
Profanity to Staff Member/Disrespectful	1		2	3	6
No Show Saturday Detention		1	1	9	11
Late to School				1	1
HIB		1	1		2
Inappropriate use of a cell phone			1		1
Inappropriate gesture/behavior		1		2	3
Cutting class		1	3	2	6
					0
					0
TOTAL	4	7	21	35	67
SATURDAY DETENTION					
SMOKING - INSIGHT PROGRAM	2	3	1	8	14
					0

**MONTHLY TARDIES REPORT
2016-2017**

TIMES TARDY	SEPT	OCT	NOV	DEC	JAN	FEB	MARCH	APRIL	MAY	JUNE
1	144	189	197	195	196	184	212	180	204	
2	24	53	83	90	80	74	93	71	92	
3	19	34	35	37	23	35	39	23	40	
4	10	24	17	20	16	12	33	9	31	
5	2	10	12	8	9	6	30	7	12	
6	3	4	4	2	3	6	9	5	5	
7	3	3	2	2	3	1	5	3	4	
8	0	3	1		3	0	3	2	2	
9	1	0	1		4	1	1	0	2	
10	1	0	1		1	0	1	0	3	
11	0	1			0	1	1	1	0	
12	1	0			0		2		0	
13		1			0		1		1	
14					1		0		1	
15							1			
16							0			
17							0			
18							0			
19							0			
20							0			
21							1			
22										
23										
24										
25										
TOTAL STUDENTS	208	322	353	354	339	320	432	301	397	0
TOTAL TARDIES	369	636	661	632	657	578	1012	540	841	0

SUP

	SEPT.	OCT.	NOV.	DEC.	JAN.	FEB.	March	MARCH	April	MAY	JUNE
Profanity											
Cut Detention/Cut Class											
Leaving School Grounds											
Smoking											
Willful Disobedience											
Truant											
Forged Note											
Fighting										2	
Conduct of Such Character											
Destruction of School and Personal Property											
Threatening Staff Member											
Threatening Student											
Disturbance in Class											
Harrassment of Student											
Possession of Drug/Alcohol											
Insubordination											
Possession of Stolen Property											
Possession of a Weapon											
Simple Assault											
TOTAL	0	0	0	0	0	0	0	0	0	2	0

ELEMENTARY SCHOOL SUSPENSIONS BY GRADE

GRADE	1	2	3	4	5	6	7	8
Tardy								
Profanity								
Cut Detention/Cut Class								
Leaving School Grounds								
Smoking								
Willful Disobedience								
Truant								
Forged Note								
Fighting					2			
Conduct of Such Character								
Destruction of School and Personal Property								
Threatening Staff Member								
Threatening Student								
Disturbance in Class								
Harrassment of Student								
Possession of Drug/Alcohol								
Insubordination								
Possession of Stolen Property								
Possession of a Weapon								
Simple Assault								
TOTAL	0	0	0	0	2	0	0	0

Document H - Policies for Revision

Monday, June 12, 2017 3:14 PM

POLICY GUIDE

ADMINISTRATION
1240/page 1 of 3
Evaluation of Superintendent
May 17
M

[See POLICY ALERT Nos. 96, 151, 175, 201, 207 and 212]

1240 EVALUATION OF SUPERINTENDENT

The purpose of the annual evaluation is to promote professional excellence and improve the skills of the Superintendent, improve the quality of the education received by the students in the schools, and provide a basis for the review of the Superintendent's performance.

This Policy and Regulation 1240 shall be developed by the Board of Education after consultation with the Superintendent and shall include, but not be limited to:

1. Determination of roles and responsibilities for the implementation of the annual evaluation policy and procedures;
2. Development of a job description and evaluation criteria based upon the Board of Education's local goals, program objectives, policies, instructional priorities, State goals, statutory requirements, and the functions, duties, and responsibilities of the Superintendent;
3. Specification of data collection and reporting methods appropriate to the job description;
4. Provisions for the preparation of an individual professional growth and development plan based in part upon any need(s) identified in the evaluation. The plan shall be mutually developed by the Board of Education and the Superintendent; and
5. Preparation of an annual ~~written~~ performance report by a majority of the full membership of the Board of Education and an annual summary conference between a majority of the total membership of the Board of Education and the Superintendent.

There shall be an annual summary conference between the Board of Education, with a majority of its total membership present, and the Superintendent which shall be held before the ~~annual a-written~~ performance report is filed. The conference shall be held in executive session, unless the Superintendent requests that it be held in public. The conference shall include, but not be limited to, review of the following:



POLICY GUIDE

ADMINISTRATION
1240/page 2 of 3
Evaluation of Superintendent

1. Performance of the Superintendent based upon the Board approved job description;
2. Progress of the Superintendent in achieving and/or implementing the school district's goals, program objectives, policies, instructional priorities, State goals, and statutory requirements; and
3. Indicators of student progress and growth toward program objectives.

The annual written performance report shall be prepared by July 1 by a majority of the Board of Education's total membership and shall include, but not be limited to:

1. Performance area(s) of strength;
2. Performance area(s) needing improvement based upon the job description and evaluation criteria set forth in N.J.A.C. 6A:10-8.1(c)2;
3. Recommendations for professional growth and development;
4. A summary of indicators of student progress and growth, and a statement of how the indicators relate to the effectiveness of the overall program and the Superintendent's performance; and
5. Provision for performance data not included in the report to be entered into the record by the Superintendent within ten teaching staff member working days after the report's completion.

The evaluation procedure for a nontenured Superintendent shall be completed by July 1 each year.

Each newly appointed or elected Board of Education member shall complete a New Jersey School Boards Association training program on the evaluation of the Superintendent within six months of the commencement of his or her term of office pursuant to N.J.S.A. 18A:17-20.3.b.



© Copyright 2017 • Strauss Esmeay Associates, LLP • 1886 Hinds Road • Suite 1 • Toms River, NJ 08753-8199 • 732-255-1500

POLICY GUIDE

ADMINISTRATION
1240/page 3 of 3
Evaluation of Superintendent

The rules in N.J.A.C. 6A:10-1.1 et seq. shall not override any conflicting provision(s) of a collective bargaining agreement or other employment contracts entered into by a school district in effect on July 1, 2013. No collective bargaining agreement entered into after July 1, 2013 shall conflict with the educator evaluation system established pursuant to N.J.A.C. 6A:10-1.1 et seq. or any other specific statute or regulation, nor shall topics subject to collective bargaining involve matters of educational policy or managerial prerogatives.

The Board of Education shall add to the Superintendent's personnel file all **annual written** performance reports and supporting data, including, but not limited to, indicators of student progress and growth. All information contained in the **annual written** performance reports and all information collected, compiled, and/or maintained by employees of the Board of Education for the purposes of conducting the educator evaluation process pursuant to N.J.A.C. 6A:10-1.1 et seq. shall be confidential. Such information shall not be subject to public inspection or copying pursuant to the Open Public Records Act, N.J.S.A. 47:1A-1 et seq. Nothing contained in N.J.A.C. 6A:10-1.1 et seq. shall be construed to prohibit the New Jersey Department of Education from, at its discretion, collecting evaluation data pursuant to N.J.S.A. 18A:6-123.e or distributing aggregate statistics regarding evaluation data.

The Board President, or the Board President's designee, shall oversee the annual evaluation of the Superintendent. The Board of Education may hire a qualified consultant to assist or advise in the evaluation process; however, the evaluation itself shall be the responsibility of the Board of Education.

Policy and Regulation 1240 shall be distributed to the Superintendent upon adoption by the Board. Amendments to this Policy and Regulation shall be distributed within ten working days after adoption.

The provisions of this Policy, Regulation, and N.J.A.C. 6A:10-8.1 et seq. are the minimum requirements for the evaluation of a Superintendent.

N.J.S.A. 18A:17-20.3; 18A:6-117 through 18A:6-129
N.J.A.C. 6A:10-1.1 et seq.; 6A:10-8.1 et seq.

Adopted: *January 19, 2016*



© Copyright 2017 • Strauss Esmay Associates, LLP • 1886 Hinds Road • Suite 1 • Toms River, NJ 08753-8199 • 732-255-1500

REGULATION GUIDE

ADMINISTRATION
R 1240/page 1 of 4
Evaluation of Superintendent
May 17
M

[See POLICY ALERT Nos. 151, 201, 207 and 212]

R 1240 EVALUATION OF SUPERINTENDENT

- A. Roles and Responsibilities for the Implementation of the Annual Evaluation Policy and Procedures
1. The Board of Education and the Superintendent will develop and the Board will adopt a job description and evaluation criteria for the Superintendent's position based upon the Board's local goals, program objectives, policies, instructional priorities, State goals, statutory requirements, and the functions, duties, and responsibilities of the Superintendent.
 2. The Superintendent shall have primary responsibility for data collection and reporting methods appropriate to the job description.
 3. The Board President, or the Board President's designee, shall oversee the annual evaluation of the Superintendent.
 4. The Board President shall establish timelines for completion of the annual evaluation of the Superintendent.
- B. Annual Summary Conference
1. The Board of Education shall conduct an annual summary conference with the Superintendent to develop and prepare an ~~a~~Annual ~~Written~~ ~~p~~Performance ~~r~~Report.
 2. The annual summary conference between the Board of Education, with a majority of its total membership present, and the Superintendent shall be held before the ~~a~~Annual ~~Written~~ ~~p~~Performance ~~r~~Report is prepared and filed.
 3. The Superintendent shall submit to all Board members any information, documents, statistics, or any other data or information he/she would like for the Board members to consider at the annual summary conference.



© Copyright 2017 • Strauss Esmay Associates, LLP • 1886 Hinds Road • Suite 1 • Toms River, NJ 08753 - 8198 • 732-255-1500

REGULATION GUIDE

ADMINISTRATION
R 1240/page 2 of 4
Evaluation of Superintendent

4. The Board President, or the Board President's designee, shall preside over the Board's annual summary conference meeting.
5. The conference shall be held in executive session, unless the Superintendent requests it be held in public. The conference shall include, but not be limited to, review of the following:
 - a. Performance of the Superintendent based upon the Board approved job description;
 - b. Progress of the Superintendent in achieving and/or implementing the school district's goals, program objectives, policies, instructional priorities, State goals, and statutory requirements; and
 - c. Indicators of student progress and growth toward program objectives.

C. Annual Written Performance Report

1. The Annual Written Performance Report shall be prepared and approved by a majority of the Board of Education's total membership by July 1 and shall include, but not be limited to:
 - a. Performance area(s) of strength;
 - b. Performance area(s) needing improvement based upon the job description and evaluation criteria set forth in N.J.A.C. 6A:10-8.1(c)2;
 - c. Recommendations for professional growth and development;
 - d. Summary of indicators of student progress and growth, and a statement of how the indicators relate to the effectiveness of the overall program and the Superintendent's performance; and



© Copyright 2017 • Strauss Esmay Associates, LLP • 1886 Hinds Road • Suite 1 • Toms River, NJ 08753 - 8199 • 732-255-1500

REGULATION GUIDE

ADMINISTRATION
R 1240/page 3 of 4
Evaluation of Superintendent

- e. Provision for performance data not included in the report to be entered into the record by the Superintendent within ten teaching staff member working days after the report's completion.
2. The Board President, or the Board President's designee, shall prepare a draft of the aAnnual Written pPerformance rReport after the annual summary conference.
3. The draft of the aAnnual Written pPerformance rReport shall be disseminated to all Board members for review and comment before presenting the draft report to the Superintendent.
 - a. In the event a Board member believes a provision(s) of the draft of the aAnnual Written pPerformance rReport is not in accord with the provisions agreed to by a majority of the Board during the annual summary conference, the Board member shall submit in writing their proposed revision(s) to the drafter of the aAnnual Written pPerformance rReport. The draft of the aAnnual Written pPerformance rReport may be revised by the drafter of the report if the drafter agrees with the Board member's proposed revision. In the event the drafter does not agree with the proposed revision(s), the issue shall be presented to the full membership of the Board of Education in executive session to make a final determination.
4. The draft of the aAnnual Written pPerformance rReport shall be presented to the full membership of the Board of Education in executive session for discussion and approval after the draft report has been disseminated to all Board members for review. The Superintendent shall receive a copy of the draft of the aAnnual Written pPerformance rReport from the Board President, or Board President's designee, prior to the executive session where the Board is scheduled to discuss and approve.
5. In the event the Superintendent does not agree with a provision(s) in the draft of the aAnnual Written pPerformance rReport, the Superintendent shall be provided an opportunity to discuss with the full membership of the Board reconsideration of the disputed provision(s).



REGULATION GUIDE

ADMINISTRATION
R 1240/page 4 of 4
Evaluation of Superintendent

6. A majority of the Board's full membership shall approve the draft of the ~~a~~Annual ~~Written~~ ~~p~~Performance ~~r~~Report before presenting the final ~~a~~Annual ~~Written~~ ~~p~~Performance ~~r~~Report to the Superintendent.
7. The Superintendent may submit a written response to the final ~~a~~Annual ~~Written~~ ~~p~~Performance ~~r~~Report, which shall be attached to the report.

D. Nontenured Superintendent of Schools

1. The evaluation procedure for a nontenured Superintendent shall also be completed by July 1 each year.

Adopted: January 19, 2016



© Copyright 2017 • Strauss Esmay Associates, LLP • 1886 Hinds Road • Suite 1 • Toms River, NJ 08753 - 8199 • 732-255-1600

POLICY GUIDE

TEACHING STAFF MEMBERS
3126/page 1 of 2
District Mentoring Program
May 17

[See POLICY ALERT Nos. 123, 125, 187, 209 and 212]

3126 DISTRICT MENTORING PROGRAM

The Board of Education shall develop a district mentoring program to provide nontenured teachers, including novice professional teachers who hold a certificate of eligibility (CE) or certificate of eligibility with advanced standing (CEAS) with an induction to the teaching profession and to the school community through differentiated supports based on the teachers' individual needs and to help them become effective professionals.

The goals of the district mentoring program shall be to enhance teacher knowledge of, and strategies related to, the **New Jersey Student Learning Core Curriculum-Content Standards** to facilitate student achievement and growth; identify exemplary teaching skills and educational practices necessary to acquire and maintain excellence in teaching; and assist first-year teachers in performing their duties and adjusting to the challenges of teaching. The Board of Education shall determine how each nontenured teacher in his or her first year of employment shall be provided with supports as outlined in N.J.A.C. 6A:9C-5.1(c). The Board shall provide an individual mentor to work one-on-one with a novice provisional teacher in accordance with N.J.A.C. 6A:9C-5.1(d). The Superintendent shall oversee the mentor selection process and ensure the individual mentor meets the minimum requirements required in N.J.A.C. 6A:9C-5.2(a).

In accordance with the provisions of N.J.A.C. 6A:9C-5.4, an approved agency and its designated staff shall be authorized to provide the services, evaluations, and recommendations specified within N.J.A.C. 6A:9B-8.6, 8.7, and 8.9 for provisional Teachers of Supplemental Instruction in Reading and Mathematics, Grades K-8 in their employ.

The district's local mentoring plan shall be in accordance with the requirements as outlined in N.J.A.C. 6A:9C-5.1 et seq.

The Superintendent of Schools or designee shall develop the district mentoring plan in accordance with the requirements outlined in N.J.A.C. 6A:9C-5.3 as part of the school district's professional development plan (PDP) pursuant to N.J.A.C. 6A:9C-4.4. The district mentoring plan shall include logistics for its implementation and describe the school district's responsibilities pursuant to N.J.A.C. 6A:9C-5.1 et seq.

© Copyright 2017 • Strauss Esmay Associates, LLP • 1886 Hinds Road • Suite 1 • Toms River, NJ 08753-8199 • 732-255-1500



POLICY GUIDE

TEACHING STAFF MEMBERS

3126/page 2 of 2

District Mentoring Program

The Board of Education shall budget State funds appropriated for the novice teacher mentoring program in accordance with the provisions of N.J.A.C. 6A:9C-5.1(f). The Board shall ensure that State funds appropriated for this program shall supplement, and not supplant, any Federal, State or local funds already devoted to planning and implementing a novice teacher mentor program. The Board of Education shall ensure that State funds shall be used for one or more of the following: stipends for mentor teachers; the costs associated with release time; substitutes for mentor teachers and novice teachers; and professional development and training activities related to the program.

Evaluations for a provisional teacher shall be completed in accordance with the requirements of N.J.A.C. 6A:9B-8.6.

N.J.S.A. 18A:26-2; 18A:26-2a

N.J.A.C. 6A:9B-8.4; 6A:9B-8.5; 6A:9B-8.6; 6A:9C-5.1

Adopted: 14 June 2011



© Copyright 2017 • Strauss Esmay Associates, LLP • 1886 Hinds Road • Suite 1 • Toms River, NJ 08753-8199 • 732-255-1500

REGULATION GUIDE

TEACHING STAFF MEMBERS
R 3126/page 1 of 7
District Mentoring Program
May 17

[See POLICY ALERT Nos. 134, 187, 209 and 212]

R 3126 DISTRICT MENTORING PROGRAM

The Board of Education is authorized to employ a holder of a certificate of eligibility (CE) or certificate of eligibility with advanced standing (CEAS) after its mentoring plan has been approved pursuant to N.J.A.C. 6A:9C-5.1.

A. Definitions (N.J.A.C. 6A:9-2.1)

1. "Certificate of Eligibility or CE" means a certificate with lifetime validity issued to persons who have completed degree, academic study, and applicable test requirements for certification. The CE permits the applicant to seek and accept employment in corresponding positions requiring certification.
2. "Certificate of Eligibility with Advanced Standing or CEAS" means a certificate with a lifetime validity issued to persons who have completed degree, academic study, applicable test requirements, and CEAS educator preparation programs for certification. The CEAS permits the applicant to seek and accept employment in positions requiring certification.
3. "District mentoring program" means a program of induction and support for non-tenured teachers, including novice provisional teachers and experienced teachers new to a school district, designed to develop them into effective professionals within the school district.
4. "Endorsement" means an authorization allowing a certificate holder to teach one or more specific subject area(s) or to serve in one or more specific teaching staff role(s).
5. "Mentor teacher" means an experienced, certified New Jersey teacher who is assigned to provide support and guidance to a novice teacher.
6. "Novice teacher" means any teacher serving full- or part-time under a provisional certificate who has not yet been issued a standard instructional certificate in any endorsement area.



REGULATION GUIDE

TEACHING STAFF MEMBERS
R 3126/page 2 of 7
District Mentoring Program

7. "Professional Standards for Teachers" means the knowledge, skills, and dispositions that all teachers must acquire to practice as teachers in accordance with N.J.A.C. 6A:9-3.3.
8. "Provisional teaching period" means a minimum of two years of full-time teaching under a provisional certificate required of all novice teachers before they are eligible to be recommended for a standard certificate.

B. Requirements for District Mentoring Program

1. The district shall develop a mentoring program to provide non-tenured teachers, including novice provisional teachers who hold a CE or CEAS, with an induction to the teaching profession and to the school district community through differentiated supports based on the teachers' individual needs and to help them become effective professionals.
2. The goals of the district mentoring program shall be to enhance teacher knowledge of, and strategies related to, the **New Jersey Student Learning Core Curriculum Content Standards (NJSLC) (CCCS)** to facilitate student achievement and growth; identify exemplary teaching skills and educational practices necessary to acquire and maintain excellence in teaching; and assist first-year teachers in performing their duties and adjusting to the challenges of teaching.
3. The Board of Education shall determine how each non-tenured teacher in his or her first year of employment, **which shall be equal to at least thirty weeks**, shall be provided with the following supports:
 - a. Comprehensive induction to school district policies and procedures including, but not limited to, introduction to school district curricula, student assessment policies, and training on the school district's evaluation rubric, including setting and assessing student learning through student growth objectives;



REGULATION GUIDE

TEACHING STAFF MEMBERS

R 3126/page 3 of 7

District Mentoring Program

- b. Individualized supports and activities, which shall be assigned at the school district's discretion and shall be aligned with the Professional Standards for Teachers at N.J.A.C. 6A:9-3.3, the Standards for Professional Learning at N.J.A.C. 6A:9C-3.3, and the school district's Commissioner-approved teaching practice instrument. The supports and activities shall be guided by:
 - (1) The non-tenured teacher's degree of preparation and experience;
 - (2) The non-tenured teacher's individual professional development plan (PDP) developed ~~within thirty instructional days of the beginning of the teaching assignment pursuant to~~ **in accordance with** N.J.A.C. 6A:9C-4.4(~~g~~);
 - (3) Areas of focus within the district mentoring plan; and
 - (4) Goals of the school and school district plans for professional development as described in N.J.A.C. 6A:9C-4.2.
 - c. One-to-one mentoring, which is required for each novice provisional teacher as set forth in 4. below.
4. The district shall provide an individual mentor to work one-to-one with a novice provisional teacher and ensure:
- a. Each novice provisional teacher is assigned an individual mentor at the beginning of the contracted teaching assignment;
 - b. The mentor teacher provides observation and feedback, opportunities for the novice teacher to observe effective practice, and confidential guidance and support in accordance with the Professional Standards for Teachers, and guides the teacher in a self-assessment on the school district's Commissioner-approved teaching practice instrument;



© Copyright 2017 • Strauss Esmay Associates, LLP • 1886 Hinds Road • Suite 1 • Toms River, NJ 08753 - 8199 • 732-255-1500

REGULATION GUIDE

TEACHING STAFF MEMBERS
R 3126/page 4 of 7
District Mentoring Program

- c. The one-to-one mentoring includes planned, in-person contact time between the mentor teacher and the novice provisional teacher holding a CE or CEAS over the course of the academic year, or proportionally longer if the novice provisional teacher holds a part-time teaching assignment;
 - d. The mentor teacher and the novice provisional teacher holding a CEAS meet at least once per week for the first four weeks of the teaching assignment;
 - e. The mentor teacher and the novice provisional teacher holding a CE meet at least once per week for the first eight weeks of the teaching assignment:
 - (1) The one-to-one mentoring shall support the novice provisional teacher in achieving the curricular objectives of the formal instructional program in which the novice provisional teacher holding a CE is enrolled.
 - f. All contact time between the mentor teacher and the novice provisional teacher shall be recorded in a log, developed as part of the district mentoring plan, submitted to the Superintendent or designee, and maintained within the school district.
5. All novice provisional teachers whose positions require possession of instructional certificates pursuant to N.J.S.A. 18A:26-2 and N.J.A.C. 6A:9B-5.1 shall comply with the district mentoring program requirements.
6. The district shall budget State funds appropriated for the novice teacher mentoring program.
- a. Subject to the availability of funds, the Department of Education shall appropriate State funds based on the number of novice teachers employed each year by the Board of Education.



REGULATION GUIDE

TEACHING STAFF MEMBERS
R 3126/page 5 of 7
District Mentoring Program

- b. The Board of Education shall ensure State funds appropriated for this program supplement, and not supplant, Federal, State, or local funds already devoted to planning and implementing a novice teacher mentor program.
 - c. The Board of Education shall ensure State funds are used for one or more of the following:
 - (1) Stipends for mentor teachers;
 - (2) The costs associated with release time;
 - (3) Substitutes for mentor and novice teachers; and
 - (4) Professional development and training activities related to the program.
 - d. If no State funds are available to pay the costs of mentoring fees, candidates who are required to complete a provisional period of teaching to obtain standard certification shall be responsible for payment of mentoring fees during the first provisional year. The Board may, at its discretion, pay all or part of the mentoring fees.
7. The school district's administrative office shall oversee the payment of mentors. Payment shall not be conferred directly from provisional novice teacher to mentor.
- C. Mentor requirements
- 1. The Superintendent shall oversee the mentor selection process and ensure the individual mentor of a novice provisional teacher meets the following minimum requirements:
 - a. Holds an instructional certificate and, when possible, is certified in the subject area in which the novice provisional teacher is working;



REGULATION GUIDE

TEACHING STAFF MEMBERS
R 3126/page 6 of 7
District Mentoring Program

- b. Has at least three years of experience and has taught full-time for at least two years within the last five years;
- c. Does not serve as the mentee's direct supervisor nor conduct evaluations of teachers;
- d. Demonstrates a record of success in the classroom:
 - (1) ~~Beginning academic year 2014-2015~~, All mentor teacher applicants shall have received a summative rating of effective or highly effective on the most recent summative evaluation, pursuant to N.J.A.C. 6A:10.
 - (a) A mentor teacher applicant in a school or school district not required pursuant to N.J.A.C. 6A:10-1 to issue summative evaluations shall demonstrate at least one year of effective teaching on his or her most recent evaluation as determined by his or her supervisor.
- e. Understands the social and workplace norms of the school district and the community it serves;
- f. Understands the resources and opportunities available in the school district and is able to act as a referral source to the novice provisional teacher; and
- g. Completes a comprehensive mentor training program with a curriculum that includes, at a minimum, training on the school district's teaching evaluation rubric and practice instrument, Professional Standards for Teachers, NJSLC CCSS, classroom observation skills, facilitating adult learning, and leading reflective conversations about teaching practice.



REGULATION GUIDE

TEACHING STAFF MEMBERS
R 3126/page 7 of 7
District Mentoring Program

D. District Mentoring Plan

1. The Superintendent or designee shall develop a district mentoring plan as part of the school district's PDP pursuant to N.J.A.C. 6A:9C-4.4. The district mentoring plan shall include logistics for its implementation and describe the school district's responsibilities pursuant to N.J.A.C. 6A:9C-5.
 - a. The Superintendent shall submit the district mentoring plan to the Board of Education for review of its fiscal impact.
 - b. The Superintendent or designee shall share the district mentoring plan with each school improvement panel, which shall oversee the school-level implementation of the district mentoring plan and shall communicate the plan to all non-tenured teachers and their mentors.
 - c. The Superintendent or designee annually shall review the plan and revise it, as necessary, based on feedback from mentor logs, each school improvement panel, and data on teacher and student performance.

Issued: 14 June 2011



© Copyright 2017 • Strauss Esmay Associates, LLP • 1886 Hinds Road • Suite 1 • Toms River, NJ 08753 - 8199 • 732-255-1800

POLICY GUIDE

TEACHING STAFF MEMBERS
3221/page 1 of 2
Evaluation of Teachers
May 17
M

[See POLICY ALERT Nos. 140, 172, 181, 201, 207 and 212]

3221 EVALUATION OF TEACHERS

The Board of Education recognizes the importance of teacher effectiveness to further the development of a professional corps of educators and to increase student achievement. The Board of Education adopts Policy and Regulation 3221 for the evaluation of teachers consistent with the Teacher Effectiveness and Accountability for the Children of New Jersey Act (TEACHNJ) and the AchieveNJ administrative codes. This Policy and Regulation provides the provisions and requirements for teacher evaluations consistent with TEACHNJ and AchieveNJ.

For the purposes of Policy and Regulation 3221, "teacher" means a teaching staff member who holds the appropriate standard, provisional, or emergency instructional certificate issued by the Board of Examiners and is assigned a class roster of students for at least one particular course.

The rules in N.J.A.C. 6A:10 – Educator Effectiveness shall not override any conflicting provision(s) of collective bargaining agreements or other employment contracts in effect on July 1, 2013 and no collective bargaining agreement entered into after July 1, 2013, shall conflict with the educator evaluation system established pursuant to N.J.A.C. 6A:10-1.1 et seq. or any other specific statute or regulation, nor shall topics subject to bargaining involve matters of educational policy or managerial prerogatives. All information contained in **annual written** performance reports and all information collected, compiled, and/or maintained by employees for the evaluation process pursuant to N.J.A.C. 6A:10-1.1 et seq. shall be confidential and shall not be subject to public inspection or copying pursuant to the Open Public Records Act, N.J.S.A. 47:1A-1 et seq.

The Board shall annually adopt evaluation rubrics for teachers which shall be submitted to the Commissioner by June 1 for approval by August 1 of each year. The evaluation rubrics shall have four defined annual ratings: ineffective, partially effective, effective, and highly effective. The Board shall meet the requirements as outlined in N.J.A.C. 6A:10-2.2(a) for the annual evaluation of teachers and shall ensure the training procedures as outlined in N.J.A.C. 6A:10-2.2(b) are followed when implementing the evaluation rubrics for all teachers. A District Evaluation Advisory Committee shall be established in accordance with the requirements of N.J.A.C. 6A:10-2.3.



POLICY GUIDE

TEACHING STAFF MEMBERS

3221/page 2 of 2

Evaluation of Teachers

The minimum requirements for the evaluation procedures for teachers as outlined in N.J.A.C. 6A:10-2.4 shall be followed. For each teacher rated ineffective or partially effective on the annual summative evaluation rating, as measured by the evaluation rubrics, a corrective action plan shall be developed in accordance with the provisions of N.J.A.C. 6A:10-2.5. A School Improvement Panel shall be established in accordance with N.J.A.C. 6A:10-3.1 and with the responsibilities outlined in N.J.A.C. 6A:10-3.2.

The components of the teacher evaluation rubric as described in N.J.A.C. 6A:10-4.1 shall apply to teachers. Measures of student achievement, as outlined in N.J.A.C. 6A:10-4.2, shall be used to determine impact on student learning. Teacher observations shall be conducted in accordance with the provisions of N.J.A.C. 6A:10-4.4. Observers shall conduct the observations pursuant to N.J.S.A. 18A:6-123.b.(8) and N.J.A.C. 6A:10-2.5 and 3.2, and they shall be trained pursuant to N.J.A.C. 6A:10-2.2(b).

The teacher practice instrument approved by the Department of Education shall meet the criteria as outlined in N.J.A.C. 6A:10-7.2.

The Superintendent shall annually notify all teachers of the adopted evaluation policies and procedures/regulations no later than October 1. If a teacher is hired after October 1, the Superintendent shall notify the teacher of the policies and procedures/regulations at the beginning of his or her employment. All teachers shall be notified of amendments to the policy and procedures/regulations within ten teacher working days of adoption.

N.J.S.A. 18A:6-117 et seq.

N.J.A.C. 6A:10-1.1 through 1.4; 6A:10-2.1 through 2.5

N.J.A.C. 6A:10-3.1 and 3.2; N.J.A.C. 6A:10-4.1 through 4.4

N.J.A.C. 6A:10-7.1 and 7.2

Adopted: 19 January 2016



© Copyright 2017 • Strauss Esmay Associates, LLP • 1886 Hinds Road • Suite 1 • Toms River, NJ 08753-8199 • 732-255-1500

REGULATION GUIDE

TEACHING STAFF MEMBERS

R 3221/page 1 of 25

Evaluation of Teachers

May 17

M

[See POLICY ALERT Nos. 181, 201, 207 and 212]

R 3221 EVALUATION OF TEACHERS

A. Definitions -- N.J.A.C. 6A:10-1.2

The following words and terms shall have the following meanings when used in Policy and Regulation 3221 unless the context clearly indicates otherwise:

“Announced observation” means an observation in which the person conducting an **observation evaluation** for the purpose of evaluation will notify the teacher of the date and the class period the observation will be conducted.

“Annual performance report” means a written appraisal of the teacher’s performance prepared by the teacher’s designated supervisor based on the evaluation rubric for his or her position.

“Annual summative evaluation rating” means an annual evaluation rating that is based on appraisals of educator practice and student performance, and includes all measures captured in a teacher’s evaluation rubric. The four summative performance categories are ineffective, partially effective, effective, and highly effective.

“Calibration” in the context of educator evaluation means a process to monitor the competency of a trained evaluator to ensure the evaluator continues to apply an educator practice instrument accurately and consistently according to the standards and definitions of the specific instrument.

“Chief School Administrator” means the Superintendent of Schools or the Administrative Principal if there is no Superintendent.

“Commissioner” means Commissioner of the New Jersey Department of Education.

“Co-observation” means two or more supervisors who are trained on the practice instrument who observe simultaneously, or at alternate times, the same lesson or portion of a lesson for the purpose of training.



© Copyright 2017 • Strauss Esmay Associates, LLP • 1886 Hinds Road • Suite 1 • Toms River, NJ 08753 - 8199 • 732-255-1500

REGULATION GUIDE

TEACHING STAFF MEMBERS
R 3221/page 2 of 25
Evaluation of Teachers

“Corrective Action Plan” means a written plan developed by the **designated supervisor** ~~a teaching staff member serving in a supervisory capacity~~ in collaboration with the teacher to address deficiencies as outlined in an evaluation. The corrective action plan shall include timelines for corrective action, responsibilities of the individual teacher and the school district for implementing the plan, and specific support that the district shall provide **as defined in N.J.S.A. 18A:6-119.**

“Department” means the New Jersey Department of Education.

“Designated supervisor” means the supervisor designated by the Superintendent of Schools or designee as the teacher’s supervisor.

“District Evaluation Advisory Committee” means a group created to oversee and guide the planning and implementation of the Board of Education’s evaluation policies and procedures as set forth in N.J.A.C. 6A:10-2.3.

“Educator practice instrument” means an assessment tool that provides: scales or dimensions that capture competencies of professional performance; and differentiation of a range of professional performance as described by the scales, which must be shown in practice and/or research studies.

“Evaluation” means an appraisal of an individual’s professional performance in relation to his or her job description, **and** professional standards; and ~~Statewide evaluation criteria that incorporates analysis of multiple measures of student achievement or growth and multiple data sources based on, when applicable, the individual’s evaluation rubric.~~

“Evaluation rubric” means a set of criteria, measures, and processes used to evaluate all teachers in a specific school district or local education agency. Evaluation rubrics consist of measures of professional practice, based on educator practice instruments, and student outcomes. Each Board of Education will have an evaluation rubric specifically for teachers, another specifically for Principals, Vice Principals, and Assistant Principals, and evaluation rubrics for other categories of teaching staff members.



REGULATION GUIDE

TEACHING STAFF MEMBERS
R 3221/page 3 of 25
Evaluation of Teachers

“Indicators of student progress and growth” means the results of assessment(s) of students as defined in N.J.A.C. 6A:8, Standards and Assessment.

“Individual professional development plan” is as defined in N.J.S.A. 18A:6-119.

“Job description” means a written specification of the function of a position, duties and responsibilities, the extent and limits of authority, and work relationships within and outside the school and school district.

~~“Long observation” means an observation for the purpose of evaluation that is conducted for a minimum duration of forty minutes or one class period, whichever is shorter.~~

~~“Model evaluation rubric” means district educator evaluation rubrics that have been reviewed and accepted by the Commissioner. A model teaching or principal evaluation rubric includes a teacher or principal practice instrument that appears on the Department’s list of approved educator practice instruments.~~

“Observation” means a method of collecting data on the performance of a teacher’s assigned duties and responsibilities. An observation for the purpose of evaluation will be included in the determination of the annual summative evaluation rating and shall be conducted by an individual employed in the school district in a supervisory role and capacity and possessing a school administrator, Principal, or supervisor endorsement as defined in N.J.A.C. 6A:9-24.1.

“^hPost-observation conference” means a meeting, either in-person or remotely, between the supervisor who conducted the observation and the teacher for the purpose of evaluation to discuss the data collected in the observation.

“Scoring guide” means a set of rules or criteria used to evaluate a performance, product, or project. The purpose of a scoring guide is to provide a transparent and reliable evaluation process. Teacher practice instruments include a scoring guide that an evaluator uses to structure his or her assessments and ratings of professional practice.



© Copyright 2017 • Strauss Esmay Associates, LLP • 1888 Hinds Road • Suite 1 • Toms River, NJ 08753 - 8199 • 732-255-1500

REGULATION GUIDE

TEACHING STAFF MEMBERS
R 3221/page 4 of 25
Evaluation of Teachers

“Semester” means half of the school year.

~~“Short observation” means an observation for the purpose of evaluation that is conducted for at least twenty minutes.~~

“Signed” means the name of one physically written by oneself or an electronic code, sound, symbol, or process attached to or logically associated with a record and executed or adopted by a person with the intent to sign the record.

“Student growth objective” means an academic goal that teachers and evaluators **designated supervisors** set for groups of students.

“Student growth percentile” means a specific metric for measuring individual student progress on Statewide assessments by tracking how much a student’s test scores have changed relative to other students Statewide with similar scores in previous years.

“Superintendent” means Superintendent of Schools or Chief School Administrator.

“Supervisor” means an appropriately certified teaching staff member, as defined in N.J.S.A. 18A:1-1, or Superintendent employed in the school district in a supervisory role and capacity, and possessing a school administrator, Principal, or supervisor endorsement as defined in N.J.A.C. 6A:9B-14.2.

“Teacher” means a teaching staff member who holds the appropriate standard, provisional, or emergency instructional certificate issued by the Board of Examiners and is assigned a class roster of students for at least one particular course.

“Teacher practice instrument” means an assessment tool that provides: scales or dimensions that capture competencies of professional performance; and differentiation of a range of professional performance as described by the scales, which must be shown in practice and/or research studies. The scores from the teacher practice instrument are components of the teacher’s evaluation rubrics and the scores are included in the summative evaluation rating for the individual.



REGULATION GUIDE

TEACHING STAFF MEMBERS
R 3221/page 5 of 25
Evaluation of Teachers

“Unannounced observation” means an observation in which the person conducting an observation for the purpose of evaluation will not notify the teacher of the date or time the observation will be conducted.

B. Applicability of Rules on Collective Bargaining Agreements – N.J.A.C. 6A:10-1.3

The rules in N.J.A.C. 6A:10-1.1 et seq. shall not override any conflicting provision(s) of collective bargaining agreements or other employment contracts entered into by a school district in effect on July 1, 2013. No collective bargaining agreement entered into after July 1, 2013, shall conflict with the educator evaluation system established pursuant to N.J.A.C. 6A:10-1.1 et seq. or any other specific statute or regulation, nor shall topics subject to bargaining involve matters of educational policy or managerial prerogatives.

C. Educator Evaluation Data, Information, and Written Annual Performance Reports – N.J.A.C. 6A:10-1.4

All information contained in ~~written~~ annual performance reports and all information collected, compiled, and/or maintained by employees of the Board of Education for the purposes of conducting the educator evaluation process pursuant to N.J.A.C. 6A:10-1.1 et seq., **including, but not limited to, digital records**, shall be confidential. Such information shall not be subject to public inspection or copying pursuant to the Open Public Records Act, N.J.S.A. 47:1A-1 et seq. Nothing contained in N.J.A.C. 6A:10-1.1 et seq. shall be construed to prohibit the Department or a school district from, at its discretion, collecting evaluation data pursuant to N.J.S.A. 18A:6-123.e or distributing aggregate statistics regarding evaluation data.

D. Evaluation of Teachers – N.J.A.C. 6A:10-2.1

1. The Board of Education annually shall adopt evaluation rubrics for teachers. The evaluation rubrics shall have four defined annual ratings: ineffective, partially effective, effective, and highly effective.



REGULATION GUIDE

TEACHING STAFF MEMBERS
R 3221/page 6 of 25
Evaluation of Teachers

2. The evaluation rubrics for teachers shall include all other relevant minimum standards set forth in N.J.S.A. 18A:6-123 (P.L. 2012, c. 26, § 17c).
 3. Evaluation rubrics shall be submitted to the Commissioner by June 1 for approval by August 1 of each year.
- E. Duties of the Board of Education – N.J.A.C. 6A:10-2.2
1. The Board of Education shall meet the following requirements for the annual evaluation of teachers, unless otherwise specified:
 - a. Establish a District Evaluation Advisory Committee to oversee and guide the planning and implementation of the Board of Education's evaluation policies and procedures as set forth in N.J.A.C. 6A:10-2.1 et seq.;
 - b. Annually adopt policies and procedures developed by the Superintendent pursuant to N.J.A.C. 6A:10-2.4, including the evaluation rubrics approved by the Commissioner pursuant to N.J.A.C. 6A:10-2.1(c);
 - (1) **The Superintendent shall develop policies and procedures that, at a minimum, ensure student performance data on the Statewide assessment is, upon receipt, promptly distributed or otherwise made available to teaching staff members who were primarily responsible for instructing the applicable students in the school year in which the assessment was taken, as well as to teaching staff members who are or will be primarily responsible for instructing the applicable students in the subsequent school year.**
 - c. Ensure the Superintendent annually notifies all teachers of the adopted evaluation policies and procedures no later than October 1. If a teacher is hired after October 1, the Board/Superintendent shall notify the teacher of the policies and procedures at the beginning of his or her employment. All teachers shall be notified of amendments to the policy and procedures within ten teacher working days of adoption;



© Copyright 2017 • Strauss Esmay Associates, LLP • 1886 Hinds Road • Suite 1 • Toms River, NJ 08753 - 8199 • 732-255-1500

REGULATION GUIDE

TEACHING STAFF MEMBERS
R 3221/page 7 of 25
Evaluation of Teachers

- d. Annually adopt by June 1, any Commissioner-approved teacher practice instruments and, as part of the process described at N.J.A.C. 6A:10-2.1(c), notify the Department which instruments will be used as part of the school district's evaluation rubrics;
 - e. Ensure the Principal of each school within the school district has established a School Improvement Panel pursuant to N.J.A.C. 6A:10-3.1. The panel shall be established annually by August 31 and shall carry out the duties and functions described in N.J.A.C. 6A:10-3.2;
 - f. Ensure data elements are collected and stored in an accessible and usable format. Data elements shall include, but not be limited to, scores or evidence from observations for the purpose of evaluation and student growth objective data; and
 - g. Ensure the Superintendent or designee certifies to the Department that any observer who conducts an observation of a teacher for the purpose of evaluation as described in N.J.A.C. 6A:10-4.4; N.J.A.C. 6A:10-5.4; and N.J.A.C. 6A:10-6.2, shall meet the statutory observation requirements of N.J.S.A. 18A:6-119; 18A:6-123.b(8); and N.J.S.A. 18A:27-3.1 and the teacher member of the School Improvement Panel requirements of N.J.A.C. 6A:10-3.2.
2. The Board of Education shall ensure the following training procedures are followed when implementing the evaluation rubric for all teachers and, when applicable, applying the Commissioner-approved educator practice instruments:
 - a. Annually provide training on and descriptions of each component of the evaluation rubric for all teachers who are being evaluated in the school district and provide more thorough training for any teacher who is being evaluated for the first time. Training shall include detailed descriptions of all evaluation rubric components including, when applicable, detailed descriptions of student achievement measures and all aspects of the educator practice instruments;





REGULATION GUIDE

TEACHING STAFF MEMBERS
R 3221/page 10 of 25
Evaluation of Teachers

- c. Methods of data collection and reporting appropriate to each job description, including, but not limited to, the process for student attribution to teachers, Principals, Assistant Principals, and Vice Principals for calculating the median and school-wide student growth percentile;
 - d. Processes for observations for the purpose of evaluation and post-observation conference(s) by a supervisor;
 - e. **Process for developing and scoring student growth objectives;**
 - fe. The process for preparation of individual professional development plans; and
 - gf. The process for preparation of an annual written performance report by the teacher's designated supervisor and an annual summary conference between the teacher and his or her designated supervisor.
3. The annual summary conference between designated supervisors and teachers shall be held before the annual written performance report is filed. The conference shall occur on or before June 30 of each school year and shall include, but not be limited to, a review of the following:
- u. The performance of the teacher based upon the job description and the scores or evidence compiled using the teacher's evaluation rubric, including, when applicable, the teacher's practice instrument;
 - (1) **The teacher's practice instrument; and**
 - (2) **Available indicators or student achievement measures such as student growth objective scores and student growth percentile scores.**
 - b. The progress of the teacher toward meeting the goals of the individual professional development plan or, when applicable, the corrective action plan; and



REGULATION GUIDE

TEACHING STAFF MEMBERS
R 3221/page 11 of 25
Evaluation of Teachers

- ~~e. Available indicators or scores of student achievement or growth, when applicable, such as student growth objective scores and student growth percentile scores; and~~
- cd. The preliminary annual written performance report.
- 4. If any scores for the teacher's evaluation rubric are not available at the time of the annual summary conference due to pending assessment results, the annual summative evaluation rating shall be calculated once all component ratings are available.
- 5. The annual written performance report shall be prepared by the teacher's designated supervisor and shall include, but not be limited to:
 - a. A summative rating based on the evaluation rubric, including, when applicable, a total score for each component as described in N.J.A.C. 6A:10-4;
 - b. Performance area(s) of strength and area(s) needing improvement based upon the job description, observations for the purpose of evaluation and, when applicable, the teacher practice instrument; and components of the teacher's evaluation rubric; and
 - c. ~~An~~ The teacher's individual professional development plan developed by the designated supervisor and the teacher or, when applicable, a corrective action plan from the evaluation year being reviewed in the report.
- 6. The teacher and the designated supervisor shall sign the report within five teacher working days of the review.
- 7. The Board of Education shall include all written performance reports and supporting data, including, but not limited to, written observation reports and additional components of the summative evaluation rating as part of the teacher's personnel file, or in an alternative, confidential location. If reports and data are stored in an alternative location, the personnel file shall clearly indicate the report's location and how it can be easily accessed. The records shall be confidential and shall not be subject to public inspection or copying pursuant to the Open Public Records Act, N.J.S.A. 47:1A-1 et seq.



REGULATION GUIDE

TEACHING STAFF MEMBERS
R 3221/page 12 of 25
Evaluation of Teachers

H. Corrective Action Plans for Teachers – N.J.A.C. 6A:10-2.5

1. For each teacher rated ineffective or partially effective on the annual summative evaluation rating, as measured by the evaluation rubrics, a corrective action plan shall be developed by the teacher and the Superintendent or the teacher's designated supervisor. If the teacher does not agree with the corrective action plan's content, the designated supervisor shall make a final determination.
2. ~~If the summative evaluation rating is calculated before the end of the school year, then~~ The corrective action plan shall be developed and the teacher and his or her designated supervisor shall meet to discuss the corrective action plan prior to ~~September 15 by October 31~~ of the following school year. ~~The conference to develop and discuss the corrective action plan may be combined with the teacher's annual summary conference that occurs at the end of the year of evaluation.~~ following the year of evaluation except:
 3. If the ineffective or partially effective summative evaluation rating is received after the start ~~October 1~~ of the school year following the year of evaluation, then a corrective action plan shall ~~must~~ be developed, and the teacher and his or her designated supervisor shall meet to discuss the corrective action plan within ~~twenty-five~~ fifteen teacher working days following the school district's receipt of the teacher's summative rating.
4. ~~The content of the corrective action plan shall replace the content of the individual professional development plan required in N.J.A.C. 6A:9C-3.4(e) and 3.7(e) until the next annual summary conference.~~
35. The content of the corrective action plan shall replace the content of the individual professional development plan required pursuant to N.J.A.C. 6A:9C-4.3(a) and 4.4(a) and shall:
 - a. Address areas in need of improvement identified in the teacher evaluation rubric;



REGULATION GUIDE

TEACHING STAFF MEMBERS
R 3221/page 13 of 25
Evaluation of Teachers

- b. Include specific, demonstrable goals for improvement;
 - c. Include responsibilities of the evaluated employee and the school district for the plan's implementation; and
 - d. Include timelines for meeting the goal(s).
46. The teacher's designated supervisor and the teacher on a corrective action plan shall discuss the teacher's progress toward the goals outlined in the corrective action plan during each required post-observation conference, ~~when required by~~ pursuant to N.J.S.A. 18A:27-3.1 or N.J.A.C. 6A:10-4.4. The teacher and his or her designated supervisor may update the goals outlined in the corrective action plan to reflect any change(s) in the teacher's progress, position, or role.
57. Progress toward the teacher's goals outlined in the corrective action plan:
- a. Shall be documented in the teacher's personnel file and reviewed at the annual summary conference and ~~at the~~ mid-year evaluation, ~~when applicable~~. Both the teacher on a corrective action plan and his or her designated supervisor may collect data and evidence to demonstrate the teacher's progress toward his or her corrective action plan goals; and
 - b8. ~~Progress toward the teacher's goals outlined in the corrective action plan~~ may be used as evidence in the teacher's next annual summative evaluation; however, such progress shall not guarantee an effective rating on the next summative evaluation.
69. Responsibilities of the evaluated teacher on a corrective action plan shall not be exclusionary of other plans for improvement determined to be necessary by the teacher's designated supervisor.



REGULATION GUIDE

TEACHING STAFF MEMBERS

R 3221/page 14 of 25

Evaluation of Teachers

710. The School Improvement Panel shall ensure teachers with a corrective action plan receive a mid-year evaluation as required by N.J.S.A. 18A:6-120.c. ~~If the corrective action plan was created on or prior to September 15 of the academic year, the mid-year evaluation shall occur before February 15; if the corrective action plan was created after September 15, the mid-year evaluation shall occur approximately midway between the development of the corrective action plan and the expected receipt of the next annual summative rating summary conference.~~ The mid-year evaluation shall include, at a minimum, a conference to discuss progress toward the teacher's goals outlined in the corrective action plan. The mid-year evaluation conference may be combined with a post-observation conference.
811. The School Improvement Panel shall ensure teachers with a corrective action plan receive one observation, including a post-observation conference, in addition to the observations required in N.J.A.C. 6A:10-4.4 for the purpose of evaluation as described in N.J.A.C. 6A:10-1.2 and 4.4(a). ~~The Superintendent or Principal shall determine the length of the additional observation.~~
912. ~~Tenured~~ Except where a school district employs only one administrator whose position requires a supervisor, principal, or school administrator endorsement, tenured teachers with a corrective action plan shall be observed by multiple observers for the purpose of evaluation as described in N.J.A.C. 6A:10-4.4(c)42.
1043. The corrective action plan shall remain in effect until the teacher receives his or her next summative evaluation rating.
11. There shall be no minimum number of teacher working days a teacher's corrective action plan can be in place.
- I. School Improvement Panel N.J.A.C. 6A:10-3 et seq.
1. School Improvement Panel Membership – N.J.A.C. 6A:10-3.1
- a. The School Improvement Panel shall include the Principal, a Vice Principal, and a teacher who is chosen in accordance with b. below by the Principal in consultation with the majority representative. **If an Assistant Principal or Vice**



REGULATION GUIDE

TEACHING STAFF MEMBERS
R 3221/page 15 of 25
Evaluation of Teachers

Principal is not available to serve on the panel, the Principal shall appoint an additional member who is employed in the district in a supervisory role and capacity, in accordance with N.J.S.A. 18A:6-120.a. The Principal may appoint additional members to the School Improvement Panel as long as all members meet the criteria outlined in this section and N.J.S.A. 18A:6-120.a and the teacher(s) on the panel represents at least one-third of its total membership.

- b. The Principal annually shall choose the teacher(s) on the School Improvement Panel through the following process:
- (1) The teacher member shall be a person with a demonstrated record of success in the classroom. A demonstrated record of success in the classroom means the teacher member shall have been rated effective or highly effective in the most recent available annual summative rating.
 - (2) The majority representative, in accordance with a. above, may submit to the Principal, teacher member nominees for consideration.
 - (3) The Principal shall have final decision-making authority and is not bound by the majority representative's list of nominees.
- c. The teacher member shall serve a full academic school year, except in case of illness or authorized leave, but may not be appointed more than three consecutive school years.
- d. All members of the School Improvement Panel shall be chosen by August 31 of each year.
2. School Improvement Panel Responsibilities – N.J.A.C. 6A:10-3.2
- a. The School Improvement Panel shall:
- (1) Oversee the mentoring of teachers according to N.J.A.C. ~~6A:9B-8~~ 6A:9C-5.3(a)2 and support the implementation of the school district mentoring plan;



REGULATION GUIDE

TEACHING STAFF MEMBERS
R 3221/page 16 of 25
Evaluation of Teachers

- (2) Conduct evaluations of teachers pursuant to N.J.A.C. 6A:10-2.4 and 4.4;
 - (3) Ensure corrective action plans for teachers are created in accordance to N.J.A.C. 6A:10-2.5(f); and ensure ~~conduct~~ mid-year evaluations are conducted for teachers who are on a corrective action plan; and
 - (4) Identify professional development opportunities for all teachers based on the review of aggregate school-level data, including, but not limited to, teacher evaluation and student performance data to support school-level professional development plans described in N.J.A.C. 6A:9C-3.54.2.
- b. To conduct observations for the purpose of evaluation, the teacher member shall have:
- (1) Agreement of the majority representative;
 - (2) An appropriate supervisory certificate; and
 - (3) Approval of the Principal who supervises the teacher being observed.
- c. The teacher member who participates in the evaluation process shall not serve concurrently as a mentor under N.J.A.C. ~~6A:9B-8.4~~ 6A:9C-5.2(a)3.
- J. Components of Teacher Evaluation Rubric – N.J.A.C. 6A:10-4.1
1. The components of the teacher evaluation rubric described in N.J.A.C. 6A:10-4.1 et seq. shall apply to teachers holding the position of teacher and holding a valid and effective standard, provisional, or emergency instructional certificate.
 2. Evaluation rubrics for all teachers shall include the requirements described in N.J.S.A. 18A:6-123, including, but not limited to:



REGULATION GUIDE

TEACHING STAFF MEMBERS
R 3221/page 17 of 25
Evaluation of Teachers

- a. Measures of student achievement pursuant to N.J.A.C. 6A:10-4.2; and
 - b. Measures of teacher practice pursuant to N.J.A.C. 6A:10-4.3 and 4.4.
3. To earn a summative rating, a teacher shall have a student achievement score, including median student growth percentile and/or student growth objectives(s) scores, and a teacher practice score pursuant to N.J.A.C. 6A:10-4.4.
4. Each score shall be converted to a percentage weight so all components make up 100 percent of the evaluation rubric. By August 31 prior to the school academic year in which the evaluation rubric applies, the Department shall provide on its website the required percentage weight of each component and the required summative rating scale. All components shall be worth the following percentage weights or fall within the following ranges:
- a. If, according to N.J.A.C. 6A:10-4.2(b), a teacher receives a median student growth percentile, the student achievement component shall be at least thirty percent and no more than fifty percent of a teacher's evaluation rubric rating as determined by the Department.
 - b. If, according to N.J.A.C. 6A:10-4.2(b), a teacher does not receive a median student growth percentile, the student achievement component shall be at least fifteen percent and no more than fifty percent of a teacher's evaluation rubric rating as determined by the Department.
 - c. Measures of teacher practice described in N.J.A.C. 6A:10-4.3 and 4.4 shall be at least fifty percent and no more than eighty-five percent of a teacher's evaluation rubric rating as determined by the Department.



REGULATION GUIDE

TEACHING STAFF MEMBERS

R 3221/page 18 of 25

Evaluation of Teachers

d. ~~Notwithstanding the provisions of a, b, and c above, if a teacher's appeal of his or her student growth objective is approved, according to N.J.A.C. 6A:10-4.2(f), the student growth objective score weight within the student achievement component and the teacher practice weight shall be adjusted by the Superintendent or the Commissioner, as applicable according to N.J.A.C. 6A:10-4.2(f).~~

5. Standardized tests, used as a measure of student progress, shall not be the predominant factor in determining a teacher's annual summative rating.

K. Student Achievement Components – N.J.A.C. 6A:10-4.2

1. Measures of student achievement shall be used to determine impact on student learning. The student achievement measure shall include the following components:

a. If the teacher meets the requirements of 2. below, the median student growth percentile of all students assigned to a teacher, which shall be calculated as set forth in 4. below; and

b. Student growth objective(s), which shall be specific and measurable, based on available student learning data, aligned to the **New Jersey Student Learning Standards (NJSL) Core Curriculum Content Standards**, and based on growth and/or achievement.

(1) For teachers who teach subjects or grades not covered by the **NJSL Core Curriculum Content Standards**, student growth objective(s) shall align to standards adopted or endorsed, as applicable, by the State Board.

2. The median student growth percentile shall be included in the annual summative rating of a teacher who:



© Copyright 2017 • Straus Esmy Associates, LLP • 1886 Hinds Road • Suite 1 • Torres River, NJ 08763 • 8199 • 732-265-1500

REGULATION GUIDE

TEACHING STAFF MEMBERS
R 3221/page 19 of 25
Evaluation of Teachers

- a. Teaches at least one course or group within a course that falls within a standardized-tested grade or subject. The Department shall maintain on its website a course listing of all standardized-tested grades and subjects for which student growth percentile can be calculated pursuant to 4. below;
 - b. Teaches the course or group within the course for at least sixty percent of the time from the beginning of the course to the day of the standardized assessment; and
 - c. Has at least twenty individual student growth percentile scores attributed to his or her name during the school academic year of the evaluation. If a teacher does not have at least twenty individual student growth percentile scores in a given school academic year, the student growth percentile scores attributed to a teacher during the two school academic years prior to the evaluation year may be used in addition to the student growth percentile scores attributed to the teacher during the school academic year of the evaluation. Only student growth percentile scores from school academic year 2013-2014 or any school year after shall be used to determine median student growth percentiles.
3. The Department shall periodically collect data for all teachers that include, but are not limited to, student achievement and teacher practice scores.
 4. The Department shall calculate the median student growth percentile for teachers using students assigned to the teacher by the school district. For teachers who have a student growth percentile score:
 - a. The Board of Education shall submit to the Department final ratings for all components, other than the student growth percentile, for the annual summative rating; and
 - b. The Department then shall report to the employing district Board of Education the annual summative rating, including the median student growth percentile for each teacher who receives a median student growth percentile.



REGULATION GUIDE

TEACHING STAFF MEMBERS
R 3221/page 20 of 25
Evaluation of Teachers

5. Student growth objectives for teachers shall be developed and measured according to the following procedures:
 - a. The Superintendent shall determine the number of required student growth objectives for teachers, including teachers with a student growth percentile. A teacher with a student growth percentile shall have at least one and not more than four student growth objectives. A teacher without a student growth percentile shall have at least two and a maximum of four student growth objectives. By August 31 prior to the school academic year the evaluation rubric applies, the Department shall provide on its website the minimum and maximum number of required student growth objectives within this range.
 - b. A teacher with a student growth percentile shall not use the standardized assessment used in determining the student growth percentile to measure progress toward a student growth objective.
 - c. Each teacher shall develop, in consultation with his or her supervisor or a Principal's designee, each student growth objective. If the teacher does not agree with the student growth objectives, the Principal shall make the final determination.
 - d. Student growth objectives and the criteria for assessing teacher performance based on the objectives shall be determined, recorded, and retained by the teacher and his or her supervisor by October 31 of each school academic year, or within twenty-five working days of the teacher's start date if the teacher begins work after October 1.
 - e. Adjustments to student growth objectives may be made by the teacher in consultation with his or her supervisor only when approved by the Superintendent or designee. Adjustments shall be recorded in the teacher's personnel file on or before February 15.



REGULATION GUIDE

TEACHING STAFF MEMBERS
R 3221/page 21 of 25
Evaluation of Teachers

(1) If the Student Growth Objective (SGO) covers only the second semester of the school year, or if the teacher begins work after October 1, adjustments shall be recorded before the mid-point of the second semester.

f. The teacher's designated supervisor shall approve ~~calculate~~ each teacher's student growth objective score. The teacher's student growth objective score, if available, shall be discussed at the teacher's annual summary conference and recorded in the teacher's personnel file.

L. Teacher Practice Components – N.J.A.C. 6A:10-4.3

1. The teacher practice component rating shall be based on the measurement of the teacher's performance according to the school district's Commissioner-approved teacher practice instrument. Observations pursuant to N.J.A.C. 6A:10-4.4 shall be used as one form of evidence for the measurement.

M. Teacher Observations – N.J.A.C. 6A:10-4.4

1. For the purpose of teacher evaluation, observers shall conduct the observations pursuant to N.J.S.A. 18A:6-123.b.(8) and N.J.A.C. 6A:10-2.5 and 3.2, and they shall be trained pursuant to N.J.A.C. 6A:10-2.2(b).

2. Observation conferences shall include the following procedures:

a. A supervisor who is present at the observation shall conduct a post-observation conference with the teacher being observed. A post-observation conference shall occur no more than fifteen teacher working days following each observation.

b. The post-observation conference shall be for the purpose of reviewing the data collected at the observation, connecting the data to the teacher practice instrument and the teacher's individual professional development plan, collecting



© Copyright 2017 • Straus Esmay Associates, LLP • 1886 Hinds Road • Suite 1 • Tom's River, NJ 08753-8100 • 732-255-1500

REGULATION GUIDE

TEACHING STAFF MEMBERS
R 3221/page 22 of 25
Evaluation of Teachers

additional information needed for the evaluation of the teacher, and offering areas to improve effectiveness. **Within a school year, the post observation conference shall be held prior to the occurrence of further observations for the purpose of evaluation.**

- c. If agreed to by the teacher, **one required post-observation conferences and any pre-conference(s)** for short observations of tenured teachers who are not on a corrective action plan may be conducted via written communication, including electronic.
 - d. **One post-observation conference may be combined with a teacher's annual summary conference, as long as it occurs within the required fifteen teacher working days following the observation for the purpose of evaluation.**
 - ed. A pre-conference, when required, shall occur at least one but not more than seven teacher working days prior to the observation.
3. Each teacher shall be observed as described in N.J.A.C. 6A:10-4.4; ~~at least three times during each school year, but not less than once during each semester.~~ For all teachers, at least one of the required observations shall be announced and preceded by a pre-conference, and at least one of the required observations shall be unannounced. The Superintendent shall decide whether ~~the third additional~~ required observations are ~~is~~ announced or unannounced, if applicable. The following additional requirements shall apply:
- a. **Each observation required for the purpose of evaluation shall be conducted for at least twenty minutes.**
 - ba. ~~Nontenured teachers shall receive a minimum of~~ be observed at least three observations ~~within times~~ each school year, but not less than once each semester. **The observations shall be conducted in accordance with the timeframe set forth in N.J.S.A. 18A:27-3.1, and observations for all other teachers shall occur prior to the annual summary conference, which shall occur prior to the end of the academic school year.**



REGULATION GUIDE

TEACHING STAFF MEMBERS
R 3221/page 23 of 25
Evaluation of Teachers

- (1) Except where a school district employs only one administrator whose position requires a supervisor, principal, or school administrator endorsement, nontenured teachers shall be observed during the course of the year by more than one appropriately certified supervisor.
- b. ~~Teachers on a corrective action plan shall receive observations within the timeline set forth in N.J.A.C. 6A:10-2.5.~~
- e. ~~Nontenured teachers shall be observed during the course of the year by more than one appropriately certified supervisor, either simultaneously or separately, by multiple observers, with the following provisions:~~
 - (1) ~~A co-observation shall fulfill the requirement in this section for multiple observers.~~
 - (2) ~~One co-observation shall count as one observation required in 4. below.~~
- d. ~~One post-observation conference may be combined with a teacher's annual summary conference as long as it occurs within the required fifteen teacher working days following the observation for the purpose of evaluation.~~
- c. Tenured teachers shall be observed at least two times during each school year. Observations for all tenured teachers shall occur prior to the annual summary conference, which shall occur prior to the end of the academic school year.
 - (1) If a tenured teacher was rated highly effective on his or her most recent summative evaluation and if both the teacher and the teacher's designated supervisor agree to use this option, one of the two required observations may be an observation of a Commissioner-approved activity other than a classroom lesson. The Department of Education shall post annually to its website a list of Commissioner-approved activities that may be observed in accordance with N.J.A.C. 6A:10-4.4.



REGULATION GUIDE

TEACHING STAFF MEMBERS
R 3221/page 24 of 25
Evaluation of Teachers

- d. Teachers on a corrective action plan shall receive, in accordance with N.J.A.C. 6A:10-2.5(h), one additional observation, including a post-observation conference.
 - e. Upon receiving a final summative evaluation that necessitates a corrective action plan, in accordance with N.J.A.C. 6A:10-2.5(a), any remaining required observation(s) shall not be conducted until the corrective action plan has been finalized.
 - fe. A written or electronic observation evaluation report shall be signed by the supervisor who conducted the observation and post-observation and the teacher who was observed.
 - gf. The teacher shall submit his or her written objection(s) of the evaluation within ten teacher working days following the conference. The objection(s) shall be attached to each party's copy of the annual written performance report.
4. ~~Each observation required for the purpose of evaluations shall be conducted for the minimum duration based on the following groups:~~
- a. ~~A nontenured teacher who is in his or her first or second year of teaching in the school district shall receive at least two long observations and one short observation.~~
 - b. ~~A nontenured teacher who is in his or her third or fourth year of teaching in the school district shall receive at least one long observation and two short observations.~~
 - c. ~~A tenured teacher shall receive at least three short observations.~~
45. To earn a teacher practice score, a nontenured teacher shall receive at least three observations.
- a. If a nontenured teacher is present for less than forty percent of the total student school days in a school academic year, he or she shall receive at least two observations to earn a teacher practice score.



REGULATION GUIDE

TEACHING STAFF MEMBERS
R 3221/page 25 of 25
Evaluation of Teachers

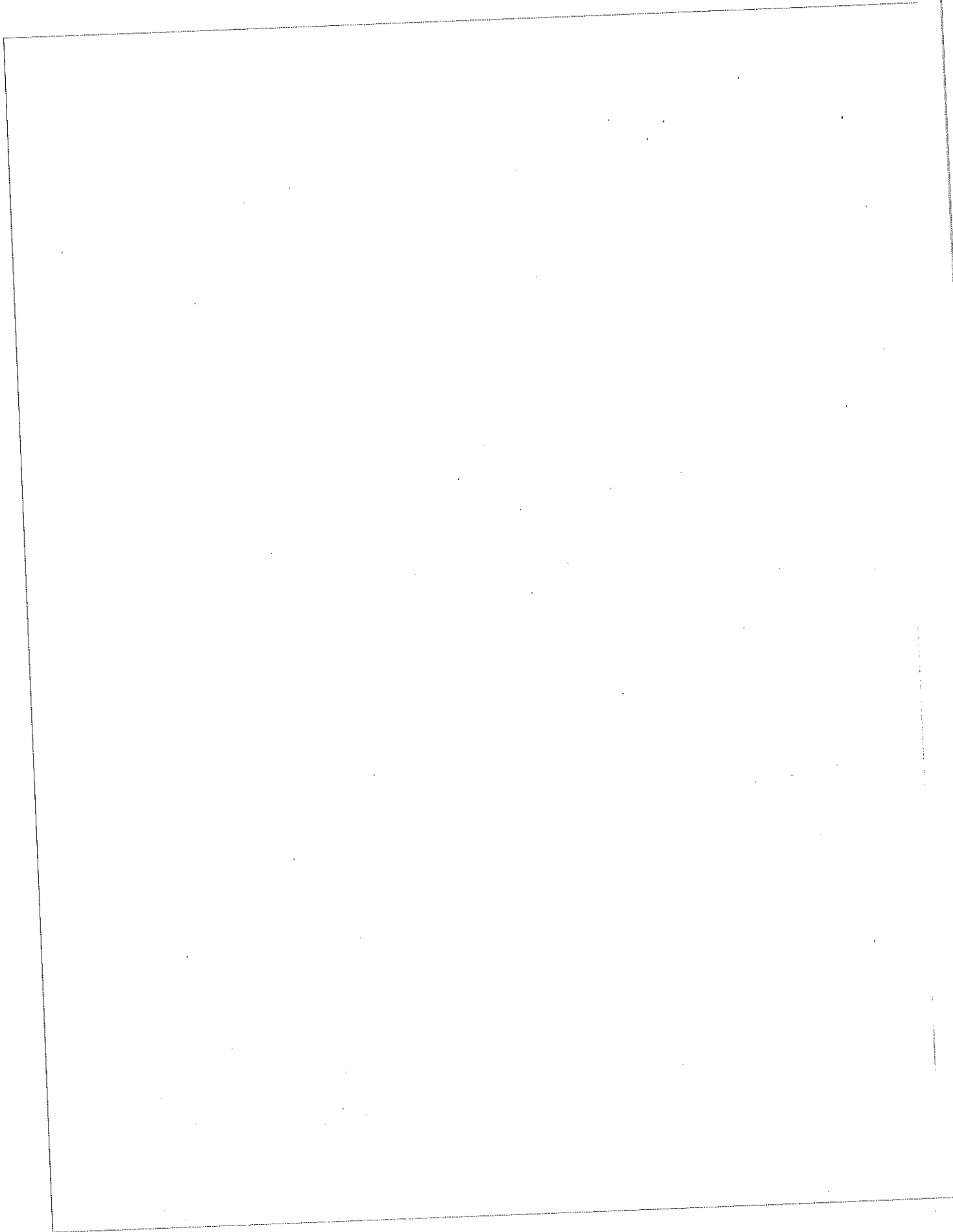
N. Teacher Practice Instrument – N.J.A.C. 6A:10-7.2

1. The teacher practice instrument approved by the Department shall meet the following criteria:
 - a. Include domains of professional practice that align to the New Jersey Professional Standards for Teachers pursuant to N.J.A.C. 6A:9-3;
 - b. Include scoring guides for assessing teacher practice that differentiate among a minimum of four levels of performance, and the differentiation has been shown in practice and/or research studies. Each scoring guide shall:
 - (1) Clearly define the expectations for each rating category;
 - (2) Provide a conversion to the four rating categories: ~~ineffective, partially effective, effective, and highly effective;~~
 - (3) Be applicable to all grades and subjects; or to specific grades and/or subjects if designed explicitly for the grades and/or subjects; and
 - (4) Use clear and precise language that facilitates common understanding among teachers and administrators.
 - c. Rely on, to the extent possible, on specific, discrete, observable, and/or measurable behaviors of students and teachers in the classroom with direct evidence of student engagement and learning; and
 - d. Include descriptions of specific training and implementation details required for the instrument to be effective.
2. ~~For Commissioner approval of a teacher practice instrument in 2015 or any year thereafter, the instrument shall include a process to assess competency on the evaluation instrument which the school district may choose to use as a measure of competency.~~

Adopted: 19 January 2011



© Copyright 2017 • Strauss Esnay Associates, LLP • 1886 Hinds Road • Suite 1 • Toms River, NJ 08763 - 8199 • 732-255-1500



POLICY GUIDE

TEACHING STAFF MEMBERS

3222/page 1 of 2

Evaluation of Teaching Staff Members, Excluding
Teachers and Administrators

May 17

M

[See POLICY ALERT Nos. 175, 201, 207 and 212]

3222 EVALUATION OF TEACHING STAFF MEMBERS, EXCLUDING TEACHERS AND ADMINISTRATORS

The Board of Education recognizes the importance of teaching staff member effectiveness to further the development of a professional corps of educators and to increase student achievement. The Board of Education adopts Policy and Regulation 3222 for the evaluation of teaching staff members consistent with the Teacher Effectiveness and Accountability for the Children of New Jersey Act (TEACHNJ) and the AchieveNJ administrative codes. This Policy and Regulation provides the provisions and requirements for teaching staff member evaluations consistent with TEACHNJ and AchieveNJ.

For the purposes of Policy and Regulation 3222, "teaching staff member" includes, but is not limited to, educational services staff members, guidance counselors, school nurses, library/media specialists, occupational therapists, and other teaching staff members working under an educational services certificate. For the purposes of Policy and Regulation 3222, "teaching staff member" does not include teachers, Principals, Vice Principals, Assistant Principals, and administrators, including, but not limited to, directors and/or supervisors.

The rules in N.J.A.C. 6A:10 - Educator Effectiveness shall not override any conflicting provision(s) of collective bargaining agreements or other employment contracts in effect on July 1, 2013 and no collective bargaining agreement entered into after July 1, 2013, shall conflict with the educator evaluation system established pursuant to N.J.A.C. 6A:10-1.1 et seq. or any other specific statute or regulation, nor shall topics subject to bargaining involve matters of educational policy or managerial prerogatives. All information contained in annual written performance reports and all information collected, compiled, and/or maintained by employees for the evaluation process pursuant to N.J.A.C. 6A:10-1.1 et seq. shall be confidential and shall not be subject to public inspection or copying pursuant to the Open Public Records Act, N.J.S.A. 47:1A-1 et seq.

The Board shall annually adopt evaluation rubrics for teaching staff members which shall be submitted to the Commissioner by June 1 for approval by August 1 of each year. The evaluation rubrics shall have four defined annual ratings: ineffective, partially effective, effective, and highly effective. The Board shall



POLICY GUIDE

TEACHING STAFF MEMBERS

3222/page 2 of 2

Evaluation of Teaching Staff Members, Excluding Teachers and Administrators

meet the requirements as outlined in N.J.A.C. 6A:10-2.2(a) for the annual evaluation of teaching staff members and shall ensure the training procedures as outlined in N.J.A.C. 6A:10-2.2(b) are followed when implementing the evaluation rubrics for all teaching staff members. A District Evaluation Advisory Committee shall be established in accordance with the requirements of N.J.A.C. 6A:10-2.3.

The minimum requirements for the evaluation procedures for teaching staff members as outlined in N.J.A.C. 6A:10-2.4 shall be followed. For each teaching staff member rated ineffective or partially effective on the annual summative evaluation rating, as measured by the evaluation rubrics, a corrective action plan shall be developed in accordance with the provisions of N.J.A.C. 6A:10-2.5.

Observations and evaluations for nontenured teaching staff members shall be in accordance with the provisions of N.J.S.A. 18A:27-3.1. Evaluations for nontenured teaching staff members shall take place before April 30 each year prior to the May 15 notice requirement date for continued employment. Evaluations for tenured teaching staff members shall be completed prior to June 30.

The Superintendent shall annually notify all teaching staff members of the adopted evaluation policies and procedures/regulations no later than October 1. If a teaching staff member is hired after October 1, the Superintendent shall notify the teaching staff member of the policies and procedures/regulations at the beginning of his or her employment. All teaching staff members shall be notified of amendments to the policy and procedures/regulations within ten teaching staff member working days of adoption.

N.J.S.A. 18A:6-117 et seq.; N.J.S.A. 18A:27-3.1
N.J.A.C. 6A:10-1.1 through 1.4; 6A:10-2.1 through 2.5; 6A:10-6.2

Adopted: 19 January 2016



© Copyright 2017 • Strauss Esmey Associates, LLP • 1886 Hinds Road • Suite 1 • Toms River, NJ 08753-8199 • 732-255-1500

REGULATION GUIDE

TEACHING STAFF MEMBERS
R 3222/page 1 of 15

Evaluation of Teaching Staff Members, Excluding
Teachers and Administrators

May 17
M

[See POLICY ALERT Nos. 181, 201, 207 and 212]

R 3222 EVALUATION OF TEACHING STAFF MEMBERS, EXCLUDING TEACHERS AND ADMINISTRATORS

A. Definitions - N.J.A.C. 6A:10-1.2

The following words and terms shall have the following meanings when used in Policy and Regulation 3222 unless the context clearly indicates otherwise:

"Annual performance report" means a written appraisal of the teaching staff member's performance prepared by the teaching staff member's designated supervisor based on the evaluation rubric for his or her position.

"Annual summative evaluation rating" means an annual evaluation rating that is based on appraisals of educator practice and student performance, if applicable, and includes all measures captured in a teaching staff member's evaluation rubric. The four summative performance categories are ineffective, partially effective, effective, and highly effective.

"Chief School Administrator" means the Superintendent of Schools or the Administrative Principal if there is no Superintendent.

"Commissioner" means Commissioner of the New Jersey Department of Education.

"Corrective Action Plan" means a written plan developed by the designated supervisor ~~a teaching staff member serving in a supervisory capacity~~ in collaboration with the teaching staff member to address deficiencies as outlined in an evaluation. The corrective action plan shall include timelines for corrective action, responsibilities of the individual teaching staff member and the school district for implementing the plan, and specific support that the district shall provide as defined in N.J.S.A. 18A:6-119.

"Department" means the New Jersey Department of Education.



REGULATION GUIDE

TEACHING STAFF MEMBERS

R 3222/page 2 of 15

Evaluation of Teaching Staff Members, Excluding
Teachers and Administrators

"Designated supervisor" means the supervisor designated by the Superintendent of Schools or designee as the teaching staff member's supervisor.

"District Evaluation Advisory Committee" means a group created to oversee and guide the planning and implementation of the Board of Education's evaluation policies and procedures as set forth in N.J.A.C. 6A:10-2.3.

"Educator practice instrument" means an assessment tool that provides scales or dimensions that capture competencies of professional performance; and differentiation of a range of professional performance as described by the scales, which must be shown in practice and/or research studies. The scores from educator practice instruments for teaching staff members other than teachers, Principals, Vice Principals, and Assistant Principals may be applied to the teaching staff member's summative evaluation rating in a manner determined by the school district.

"Evaluation" means an appraisal of an individual's professional performance in relation to his or her job description, and professional standards, and ~~Statewide evaluation criteria that incorporates analysis of multiple measures of student achievement or growth, as applicable, and multiple data sources based on, when applicable, the individual's~~ evaluation rubric.

"Evaluation rubric" means a set of criteria, measures, and processes used to evaluate all teaching staff members in a specific school district or local education agency. Evaluation rubrics consist of measures of professional practice, based on educator practice instruments and student outcomes. Each Board of Education will have an evaluation rubric specifically for teachers, another specifically for Principals, Vice Principals, and Assistant Principals, and evaluation rubrics for other categories of teaching staff members.

"Indicators of student progress and growth" means the results of assessment(s) of students as defined in N.J.A.C. 6A:8, Standards and Assessment.

"Individual professional development plan" is as defined in N.J.S.A. 18A:6-119.



REGULATION GUIDE

TEACHING STAFF MEMBERS

R 3222/page 3 of 15

Evaluation of Teaching Staff Members, Excluding
Teachers and Administrators

"Job description" means a written specification of the function of a position, duties and responsibilities, the extent and limits of authority, and work relationships within and outside the school and school district.

~~"Model evaluation rubric" means district educator evaluation rubrics that have been reviewed and accepted by the Commissioner. A model teaching or principal evaluation rubric includes a teacher or principal practice instrument that appears on the Department's list of approved educator practice instruments.~~

"Observation" means a method of collecting data on the performance of a teaching staff member's assigned duties and responsibilities. An observation for the purpose of evaluation will be included in the determination of the annual summative evaluation rating and shall be conducted by an individual employed in the school district in a supervisory role and capacity and possessing a school administrator, Principal, or supervisor endorsement as defined in N.J.A.C. 6A:9-24.1.

"Post-observation conference" means a meeting, either in-person or remotely, between the supervisor who conducted the observation and the teaching staff member for the purpose of evaluation to discuss the data collected in the observation.

"Scoring guide" means a set of rules or criteria used to evaluate a performance, product, or project. The purpose of a scoring guide is to provide a transparent and reliable evaluation process. Educator practice instruments include a scoring guide that an evaluator uses to structure his or her assessments and ratings of professional practice.

"Semester" means half of the school year.

"Signed" means the name of one physically written by oneself or an electronic code, sound, symbol, or process attached to or logically associated with a record and executed or adopted by a person with the intent to sign the record.

"Student growth objective" means an academic goal that teaching staff members and designated supervisors ~~evaluators~~ set for groups of students.



REGULATION GUIDE

TEACHING STAFF MEMBERS

R 3222/page 4 of 15

Evaluation of Teaching Staff Members, Excluding Teachers and Administrators

“Superintendent” means Superintendent of Schools or Chief School Administrator.

“Supervisor” means an appropriately certified teaching staff member, as defined in N.J.S.A. 18A:1-1, or Superintendent employed in the school district in a supervisory role and capacity, and possessing a school administrator, Principal, or supervisor endorsement as defined in N.J.A.C. 6A:9B-142.

“Teaching staff member” for the purposes of Policy 3222 and this Regulation, includes, but is not limited to, educational services staff members, guidance counselors, school nurses, library/media specialists, occupational therapists, and other teaching staff members working under an educational services certificate and does not include teachers, Principals, Vice Principals, Assistant Principals, and administrators, including, but not limited to, Directors and/or Supervisors.

B. **Applicability of Rules on Collective Bargaining Agreements – N.J.A.C. 6A:10-1.3**

The rules in N.J.A.C. 6A:10-1.1 et seq. shall not override any conflicting provision(s) of collective bargaining agreements or other employment contracts entered into by a school district in effect on July 1, 2013. No collective bargaining agreement entered into after July 1, 2013, shall conflict with the educator evaluation system established pursuant to N.J.A.C. 6A:10-1.1 et seq. or any other specific statute or regulation, nor shall topics subject to bargaining involve matters of educational policy or managerial prerogatives.

C. **Educator Evaluation Data, Information, and Written Annual Performance Reports – N.J.A.C. 6A:10-1.4**

All information contained in written annual performance reports and all information collected, compiled, and/or maintained by employees of the Board of Education for the purposes of conducting the educator evaluation process pursuant to N.J.A.C. 6A:10-1.1 et seq., **including, but not limited to, digital records**, shall be confidential. Such information shall not be subject to public inspection or copying pursuant to the Open Public



REGULATION GUIDE

TEACHING STAFF MEMBERS
R 3222/page 5 of 15

Evaluation of Teaching Staff Members, Excluding
Teachers and Administrators

Records Act, N.J.S.A. 47:1A-1 et seq. Nothing contained in N.J.A.C. 6A:10-1.1 et seq. shall be construed to prohibit the Department or a school district from, at its discretion, collecting evaluation data pursuant to N.J.S.A. 18A:6-123.e or distributing aggregate statistics regarding evaluation data.

D. Evaluation of Teaching Staff Members – N.J.A.C. 6A:10-2.1

1. The Board of Education annually shall adopt evaluation rubrics for all teaching staff members. The evaluation rubrics shall have four defined annual ratings: ineffective, partially effective, effective, and highly effective.
2. Evaluation rubrics shall be submitted to the Commissioner by June 1 for approval by August 1 of each year.

E. Duties of the Board of Education – N.J.A.C. 6A:10-2.2

1. The Board of Education shall meet the following requirements for the annual evaluation of teaching staff members, unless otherwise specified:
 - a. Establish a District Evaluation Advisory Committee to oversee and guide the planning and implementation of the Board of Education's evaluation policies and procedures as set forth in N.J.A.C. 6A:10-2 et seq.;
 - b. Annually adopt policies and procedures developed by the Superintendent pursuant to N.J.A.C. 6A:10-2.4, including the evaluation rubrics approved by the Commissioner pursuant to N.J.A.C. 6A:10-2.1(c);
 - (1) The Superintendent shall develop policies and procedures that, at a minimum, ensure student performance data on the Statewide assessment is, upon receipt, promptly distributed or otherwise made available to staff members who were primarily responsible for instructing the applicable students in the school year in which the assessment was taken, as well as to staff members who are or will be primarily responsible for instructing the applicable students in the subsequent school year.



REGULATION GUIDE

TEACHING STAFF MEMBERS

R 3222/page 6 of 15

Evaluation of Teaching Staff Members, Excluding Teachers and Administrators

- c. Ensure the Superintendent annually notifies all teaching staff members of the adopted evaluation policies and procedures no later than October 1. If a teaching staff member is hired after October 1, the Board/Superintendent shall notify the teaching staff member of the policies and procedures at the beginning of his or her employment. All teaching staff members shall be notified of amendments to the policy and procedures within ten teaching-staff-member working days of adoption;
- d. Annually adopt by June 1, any Commissioner-approved educator practice instruments and, as part of the process described at N.J.A.C. 6A:10-2.1(c), notify the Department which instruments will be used as part of the school district's evaluation rubrics;
- e. Ensure the Principal of each school within the school district has established a School Improvement Panel pursuant to N.J.A.C. 6A:10-3.1. The panel shall be established annually by August 31 and shall carry out the duties and functions described in N.J.A.C. 6A:10-3.2;
- f. Ensure data elements are collected and stored in an accessible and usable format. Data elements shall include, but not be limited to, scores or evidence from observations for the purpose of evaluation and student growth objective data; and
- g. Ensure the Superintendent or designee certifies to the Department that any observer who conducts an observation of a teaching staff member for the purpose of evaluation as described in N.J.A.C. 6A:10-4.4; N.J.A.C. 6A:10-5.4, and N.J.A.C. 6A:10-6.2, shall meet the statutory observation requirements of N.J.S.A. 18A:6-119; 18A:6-123.b(8); and N.J.S.A. 18A:27-3.1 and the teacher member of the School Improvement Panel requirements of N.J.A.C. 6A:10-3.2.



REGULATION GUIDE

TEACHING STAFF MEMBERS

R 3222/page 7 of 15

Evaluation of Teaching Staff Members, Excluding Teachers and Administrators

2. The Board of Education shall ensure the following training procedures are followed when implementing the evaluation rubric for all teaching staff members and, when applicable, applying the Commissioner-approved educator practice instruments:
 - a. Annually provide training on and descriptions of each component of the evaluation rubric for all teaching staff members who are being evaluated in the school district and provide more thorough training for any teaching staff member who is being evaluated for the first time. Training shall include detailed descriptions of all evaluation rubric components including, when applicable, detailed descriptions of student achievement measures and all aspects of the educator practice instruments;
 - ~~b. Provide training on the teaching staff member practice instruments for any supervisor who will conduct observations for the purpose of evaluation of teaching staff members. Training shall be provided before the observer conducts his or her first observation for the purpose of evaluation;~~
 - be. Annually provide updates and refresher training on the teaching staff member practice instruments for any supervisors who will observe teaching staff member practice for the purpose of increasing accuracy and consistency among observers are conducting evaluations in the school district and more thorough training for any supervisor who will evaluate teaching staff members for the first time. Training shall be provided on each component of the evaluated teaching staff member's evaluation rubric before the evaluation of a teaching staff member; and
 - ed. The Superintendent shall annually certify to the Department that all supervisors of teaching staff members in the school district who are utilizing educator practice instruments evaluation rubrics have completed training on the instrument and its application and have demonstrated competency in applying the educator practice instruments evaluation rubrics.



© Copyright 2017 • Strausz Esnay Associates, LLP • 1856 Hinds Road • Suite 1 • Toms River, NJ 08753 - 8199 • 732-255-1500

REGULATION GUIDE

TEACHING STAFF MEMBERS

R 3222/page 8 of 15

Evaluation of Teaching Staff Members, Excluding Teachers and Administrators

F. District Evaluation Advisory Committee – N.J.A.C. 6A:10-2.3

1. Members of the District Evaluation Advisory Committee shall include representation from the following groups: teachers from each school level represented in the school district; central office administrators overseeing the teacher evaluation process; supervisors involved in teacher evaluation, when available or appropriate; and administrators conducting evaluations, including a minimum of one administrator conducting evaluations who participates on a School Improvement Panel. Members also shall include the Superintendent, a special education administrator, a parent, and a member of the Board of Education.
2. The Superintendent may extend membership on the District Evaluation Advisory Committee to representatives of other groups and to individuals.
3. Beginning in ~~2017-2018~~ **2018-2019**, the District Evaluation Advisory Committees shall no longer be required and the Board of Education shall have the discretion to continue the District's Evaluation Advisory Committee.

G. Evaluation Procedures for Teaching Staff Members – N.J.A.C. 6A:10-2.4

1. The provisions outlined in Policy and Regulation 3222 and N.J.A.C. 6A:10-2.4 shall be the minimum requirements for the evaluation of teaching staff members.
2. Evaluation policies and procedures requiring the annual evaluation of all teaching staff members shall be developed under the direction of the Superintendent, who may consult with the District Evaluation Advisory Committee or representatives from School Improvement Panels, and shall include, but not be limited to, a description of:
 - a. Roles and responsibilities for implementation of evaluation policies and procedures;
 - b. Job descriptions, evaluation rubrics for all teaching staff members, the process for calculating the summative ratings and each component, and the evaluation regulations set forth in N.J.A.C. 6A:10 et seq.;



REGULATION GUIDE

TEACHING STAFF MEMBERS
R 3222/page 9 of 15

Evaluation of Teaching Staff Members, Excluding
Teachers and Administrators

- c. Methods of data collection and reporting appropriate to each job description, including, but not limited to, the process for student attribution to teachers, Principals, Assistant Principals, and Vice Principals for calculating the median and school-wide student growth percentile;
 - d. Processes for observations for the purpose of evaluation and post-observation conference(s) by a supervisor;
 - c. **Process for developing and scoring student growth objectives;**
 - fe. The process for preparation of individual professional development plans; and
 - gf. The process for preparation of an annual written performance report by the teaching staff member's designated supervisor, and an annual summary conference between the teaching staff member and his or her designated supervisor.
3. The annual summary conference between the designated supervisor and the teaching staff member shall be held before the **written annual performance report is filed**. The conference shall occur on or before June 30 of each school year and shall include, but not be limited to, a review of the following:
- a. The performance of the teaching staff member based upon the job description and, ~~when applicable~~, the scores or evidence compiled using the teaching staff member's evaluation rubric, including, whenever applicable, ~~the teaching staff member's practice instrument~~;
 - (1) **The teaching staff member's practice instrument; and**
 - (2) **Available indicators or student achievement measures such as student growth objective scores and student growth percentile scores.**



REGULATION GUIDE

TEACHING STAFF MEMBERS
R 3222/page 10 of 15

Evaluation of Teaching Staff Members, Excluding
Teachers and Administrators

- b. The progress of the teaching staff member toward meeting the goals of the individual professional development plan or, when applicable, the corrective action plan; and
 - ~~c. Available indicators or scores of student achievement or growth, when applicable, such as student growth objective scores and student growth percentile scores; and~~
 - cd. The preliminary annual written performance report.
4. If any scores for the teaching staff member's evaluation rubric are not available at the time of the annual summary conference due to pending assessment results, the annual summative evaluation rating shall be calculated once all component ratings are available.
 5. The annual written performance report shall be prepared by the teaching staff member's designated supervisor and shall include, but not be limited to:
 - a. A summative rating based on the evaluation rubric;
 - b. Performance area(s) of strength and area(s) needing improvement based upon the job description, observations for the purpose of evaluation and, when applicable, the teaching staff member practice instrument; and components of the teaching staff member's evaluation rubric; and
 - c. ~~An~~ The teaching staff member's individual professional development plan developed by the designated supervisor and the teaching staff member or, when applicable, a corrective action plan from the evaluation year being reviewed in the report.
 6. The teaching staff member and the designated supervisor shall sign the report within five teaching staff member working days of the review.



© Copyright 2017 • Strauss Esmay Associates, LLP • 1855 Hinds Road • Suite 1 • Toms River, NJ 08783-8199 • 732-255-1500

REGULATION GUIDE

TEACHING STAFF MEMBERS

R 3222/page 11 of 15

Evaluation of Teaching Staff Members, Excluding
Teachers and Administrators

7. The Board of Education shall include all written performance reports and supporting data, including, but not limited to, written observation reports and additional components of the summative evaluation rating as part of the teaching staff member's personnel file or in an alternative, confidential location. If reports and data are stored in an alternative location, the personnel file shall clearly indicate the report's location and how it can be easily accessed. The records shall be confidential and shall not be subject to public inspection or copying pursuant to the Open Public Records Act, N.J.S.A. 47:1A-1 et seq.
- H. Corrective Action Plans for Teaching Staff Members - N.J.A.C. 6A:10-2.5
 1. For each teaching staff member rated ineffective or partially effective on the annual summative evaluation, as measured by the evaluation rubrics, a corrective action plan shall be developed by the teaching staff member and the Superintendent or the teaching staff member's designated supervisor. If the teaching staff member does not agree with the corrective action plan's content, the designated supervisor shall make a final determination.
 2. ~~If the summative evaluation rating is calculated before the end of the school year, then~~ The corrective action plan shall be developed and the teaching staff member and his or her designated supervisor shall meet to discuss the corrective action plan ~~prior to September 15 by October 31 of the following school year. The conference to develop and discuss the corrective action plan may be combined with the teaching staff member's annual summary conference that occurs at the end of the year of evaluation,~~ following the year of evaluation, except:
 - a3. If the ineffective or partially effective summative evaluation rating is received after **October 1** ~~the start of the~~ school year following the year of evaluation, ~~then~~ a corrective action plan **shall** ~~must~~ be developed, and the teaching staff member and his or her designated supervisor shall meet to discuss the corrective action plan within **twenty-five** ~~fifteen~~ teaching staff member working days following the school district's receipt of the teaching staff member's summative rating.



REGULATION GUIDE

TEACHING STAFF MEMBERS

R 3222/page 12 of 15

Evaluation of Teaching Staff Members, Excluding Teachers and Administrators

4. ~~The content of the corrective action plan shall replace the content of the individual professional development plan required in N.J.A.C. 6A:9C-3.4(e) and 3.7(e) until the next annual summary conference.~~
35. The content of the corrective action plan shall **replace the content of the individual professional development plan required pursuant to N.J.A.C. 6A:9C-4.3(a) and 4.4(a) and shall:**
- a. Address areas in need of improvement identified in the teaching staff member evaluation rubric;
 - b. Include specific, demonstrable goals for improvement;
 - c. Include responsibilities of the evaluated employee and the school district for the plan's implementation; and
 - d. Include timelines for meeting the goal(s).
46. The teaching staff member's designated supervisor and the teaching staff member on a corrective action plan shall discuss the teaching staff member's progress toward the goals outlined in the corrective action plan during each required post-observation conference. The teaching staff member and his or her designated supervisor may update the goals outlined in the corrective action plan to reflect any change(s) in the teaching staff member's progress, position, or role.
57. Progress toward the teaching staff member's goals outlined in the corrective action plan:
- a. Shall be documented in the teaching staff member's personnel file and reviewed at the annual summary conference and ~~or the mid-year evaluation, when applicable.~~ Both the teaching staff member on a corrective action plan and his or her designated supervisor may collect data and evidence to demonstrate the teaching staff member's progress toward his or her corrective action plan goals; and



REGULATION GUIDE

TEACHING STAFF MEMBERS

R 3222/page 13 of 15

Evaluation of Teaching Staff Members, Excluding Teachers and Administrators

- b8. ~~Progress toward the teaching staff member's goals outlined in the corrective action plan~~ May be used as evidence in the teaching staff member's next annual summative evaluation; however, such progress shall not guarantee an effective rating on the next summative evaluation.
69. Responsibilities of the evaluated teaching staff member on a corrective action plan shall not be exclusionary of other plans for improvement determined to be necessary by the teaching staff member's designated supervisor.
710. The corrective action plan shall remain in effect until the teaching staff member receives his or her next summative evaluation rating.
8. **There shall be no minimum number of teaching staff member working days a teacher's corrective action plan can be in place.**
1. Teaching Staff Member Observations and Evaluations - N.J.A.C. 6A:10-6.2
1. The Superintendent shall determine the duration of observations required pursuant to N.J.S.A. 18A:27-3.1 for nontenured teaching staff members, except teachers, Principals, Vice Principals, and Assistant Principals. **Observations include, but are not limited to, observations of meetings, student instruction, parent conferences, and case-study analysis of a significant student issue. The observation shall:**
- Be at least twenty minutes in length;
 - Be followed within fifteen teaching staff member working days by a conference between the supervisor who made the observation and the nontenured teaching staff member;
 - Be followed by both parties to such a conference signing the written or electronic observation report and each retaining a copy of his or her records; and



REGULATION GUIDE

TEACHING STAFF MEMBERS

R 3222/page 14 of 15

Evaluation of Teaching Staff Members, Excluding Teachers and Administrators

- d. Allow the nontenured teaching staff member to submit his or her written objection(s) of the evaluation within ten teaching staff member working days following the conference. The objection(s) shall be attached to each party's copy of the annual performance report.
2. All tenured teaching staff members shall receive at least one observation per school year.
3. All nontenured teaching staff members shall receive at least three observations, as required pursuant to N.J.S.A. 18A:27-3.1.
- ~~2. Each nontenured teaching staff member shall be observed and evaluated in the performance of his or her duties at least three times during each school year, but not less than once during each semester.~~
- ~~3. Each tenured teaching staff member shall be observed and evaluated in the performance of his or her duties at least once each school year. The Superintendent shall determine the duration of observations.~~
- ~~4. Observations include, but are not limited to, observations of meetings, student instruction, parent conferences, and case study analysis of a significant student issue.~~
- ~~5. Each observation shall be followed within fifteen teaching staff member working days by a conference between the Superintendent or designated supervisor who made the observation and written or electronic evaluation, and the teaching staff member. Both parties to such a conference shall sign the written evaluation report and each shall retain a copy for his or her records. The purpose of this procedure is to recommend as to reemployment, identify any deficiencies, extend assistance for correction, and improve professional competence.~~



© Copyright 2017 • Strauss Esmay Associates, LLP • 1008 Hinds Road • Suite 1 • Toms River, NJ 08753 • 8190 • 732-255-1600

REGULATION GUIDE

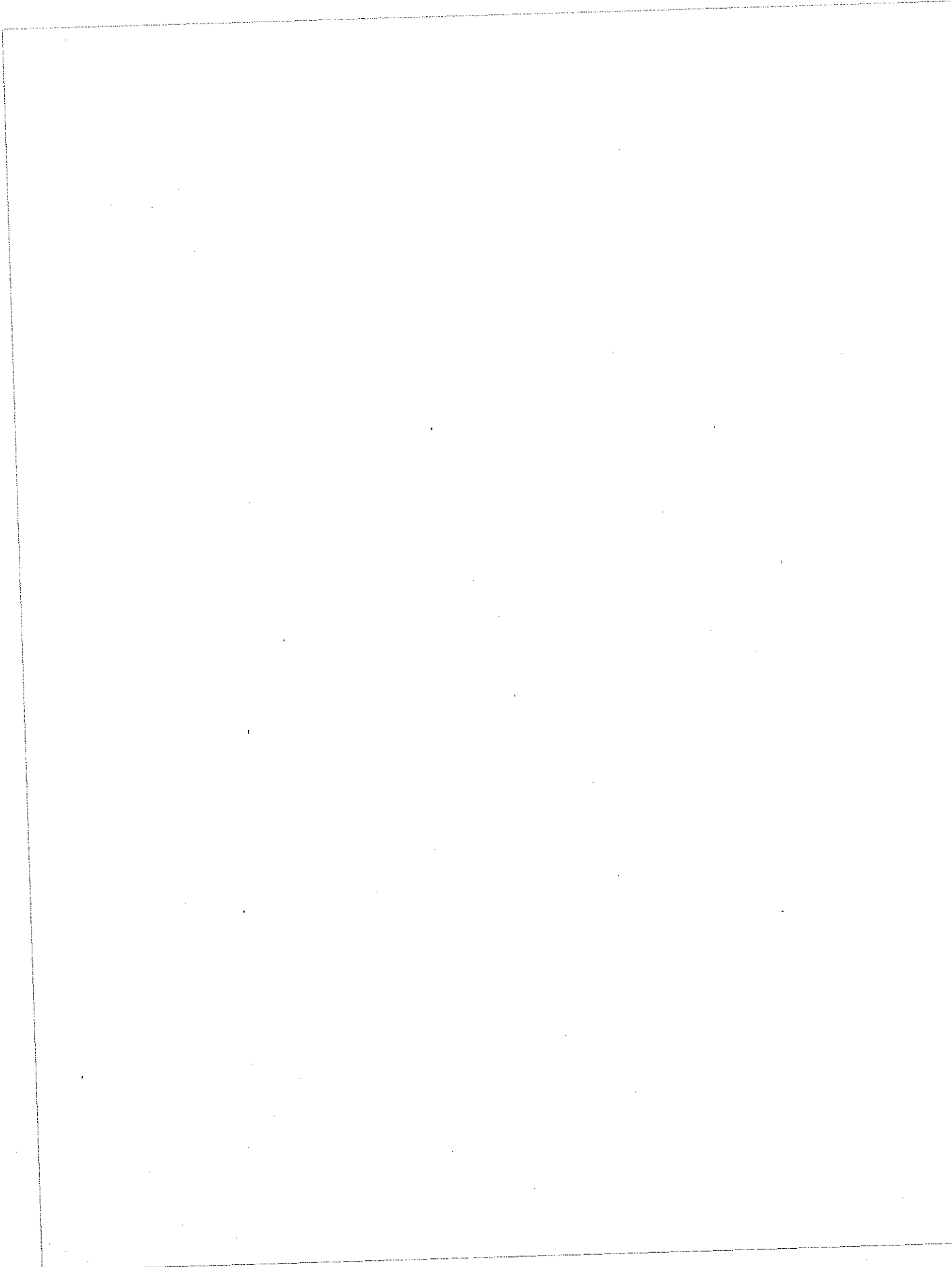
TEACHING STAFF MEMBERS
R 3222/page 15 of 15

Evaluation of Teaching Staff Members, Excluding
Teachers and Administrators

- ~~6. The teaching staff member may submit his or her written objection(s) of the evaluation within ten teaching staff member working days following the conference. The objection(s) shall be attached to each party's copy of the annual written performance report.~~
- a7. The required observations and evaluations for nontenured teaching staff members shall take place before April 30 each year. These observations and evaluations may cover that period between April 30 of one year and April 30 of the succeeding year except in the case of the first year of employment where the three observations and evaluations must have been completed prior to April 30.
- b8. The number of required observations and evaluations for nontenured teaching staff members may be reduced proportionately when an individual teaching staff member's term of service is less than one academic year.
49. Evaluations for tenured teaching staff shall be completed prior to June 30.

Adopted: 16 January 2016





POLICY GUIDE

TEACHING STAFF MEMBERS

3223/page 1 of 2

Evaluation of Administrators, Excluding Principals,
Vice Principals, and Assistant Principals

May 17

M

[See POLICY ALERT Nos. 175, 201, 207 and 212]

3223 EVALUATION OF ADMINISTRATORS, EXCLUDING PRINCIPALS, VICE PRINCIPALS, AND ASSISTANT PRINCIPALS

The Board of Education recognizes the importance of administrator effectiveness to further the development of a professional corps of educators and to increase student achievement. The Board of Education adopts Policy and Regulation 3223 for the evaluation of administrators consistent with the Teacher Effectiveness and Accountability for the Children of New Jersey Act (TEACHNJ) and the AchieveNJ administrative codes. This Policy and Regulation provides the provisions and requirements for administrator evaluations consistent with TEACHNJ and AchieveNJ.

For the purposes of Policy and Regulation 3223, "administrator" means an appropriately certified staff member, as defined in N.J.S.A. 18A-1.1, employed in the school district in an administrative and/or supervisory role and capacity, and holding a valid and effective standard, provisional, or emergency administrative certificate. An "administrator" may be a director, supervisor, or any other administrative or supervisory position in the district. For the purposes of Policy and Regulation 3223 and N.J.A.C. 6A:10-1.1 et seq., "administrator" is not a Principal, Vice Principal, or Assistant Principal.

The rules in N.J.A.C. 6A:10 – Educator Effectiveness shall not override any conflicting provision(s) of collective bargaining agreements or other employment contracts in effect on July 1, 2013 and no collective bargaining agreement entered into after July 1, 2013, shall conflict with the educator evaluation system established pursuant to N.J.A.C. 6A:10-1.1 et seq. or any other specific statute or regulation, nor shall topics subject to bargaining involve matters of educational policy or managerial prerogatives. All information contained in annual written performance reports and all information collected, compiled, and/or maintained by employees for the evaluation process pursuant to N.J.A.C. 6A:10-1.1 et seq. shall be confidential and shall not be subject to public inspection or copying pursuant to the Open Public Records Act, N.J.S.A. 47:1A-1 et seq.



POLICY GUIDE

TEACHING STAFF MEMBERS

3223/page 2 of 2

Evaluation of Administrators, Excluding Principals, Vice Principals, and Assistant Principals

The Board shall annually adopt evaluation rubrics for administrators which shall be submitted to the Commissioner by June 1 for approval by August 1 of each year. The evaluation rubrics shall have four defined annual ratings: ineffective, partially effective, effective, and highly effective. The Board shall meet the requirements as outlined in N.J.A.C. 6A:10-2.2(a) for the annual evaluation of administrators and shall ensure the training procedures as outlined in N.J.A.C. 6A:10-2.2(b) are followed when implementing the evaluation rubrics for all administrators. A District Evaluation Advisory Committee shall be established in accordance with the requirements of N.J.A.C. 6A:10-2.3.

The minimum requirements for the evaluation procedures for administrators as outlined in N.J.A.C. 6A:10-2.4 shall be followed. For each administrator rated ineffective or partially effective on the annual summative evaluation rating, as measured by the evaluation rubrics, a corrective action plan shall be developed in accordance with the provisions of N.J.A.C. 6A:10-2.5.

Observations and evaluations for nontenured administrators shall be in accordance with the provisions of N.J.S.A. 18A:27-3.1. Evaluations for nontenured administrators shall take place before April 30 each year prior to the May 15 notice requirement date for continued employment. Evaluations for tenured administrators shall be completed prior to June 30.

The Superintendent annually shall notify all administrators of the adopted evaluation policies and procedures/regulations no later than October 1. If an administrator is hired after October 1, the Superintendent shall notify the administrator of the policies and procedures/regulations at the beginning of his or her employment. All administrators shall be notified of amendments to the policy and procedures/regulations within ten administrator working days of adoption.

N.J.S.A. 18A:6-117 et seq.; N.J.S.A. 18A:27-3.1
N.J.A.C. 6A:10-1.1 through 1.4; 6A:10-2.1 through 2.5

Adopted: 19 January 2016



REGULATION GUIDE

TEACHING STAFF MEMBERS
R 3223/page 1 of 15
Evaluation of Administrators, Excluding
Principals, Vice Principals, and
Assistant Principals
May 17
M

[See POLICY ALERT Nos. 201, 207 and 212]

R 3223 EVALUATION OF ADMINISTRATORS, EXCLUDING PRINCIPALS, VICE PRINCIPALS, AND ASSISTANT PRINCIPALS

A. Definitions – N.J.A.C. 6A:10-1.2

The following words and terms shall have the following meanings when used in Policy and Regulation 3223 unless the context clearly indicates otherwise:

“Administrator” means an appropriately certified staff member, as defined in N.J.S.A. 18A-1.1, employed in the school district in an administrative and/or supervisory role and capacity, and holding a valid and effective standard, provisional, or emergency administrative certificate. An “administrator” may be a director, supervisor or any other administrative or supervisory position in the district. For the purposes of Policy and Regulation 3223 and N.J.A.C. 6A:10-1.1 et seq., “administrator” is not a Principal, Vice Principal, or Assistant Principal.

“Annual performance report” means a written appraisal of the administrator’s performance prepared by the administrator’s designated supervisor based on the evaluation rubric for his or her position.

“Annual summative evaluation rating” means an annual evaluation rating that is based on appraisals of educator practice and student performance, and includes all measures captured in an administrator’s evaluation rubric. The four summative performance categories are ineffective, partially effective, effective, and highly effective.

“Chief School Administrator” means the Superintendent of Schools or the Administrative Principal if there is no Superintendent.

“Commissioner” means Commissioner of the New Jersey Department of Education.



REGULATION GUIDE

TEACHING STAFF MEMBERS
R 3223/page 2 of 15
Evaluation of Administrators, Excluding
Principals, Vice Principals, and
Assistant Principals

"Corrective Action Plan" means a written plan developed by the administrator's designated supervisor in collaboration with the administrator to address deficiencies as outlined in an evaluation. The corrective action plan shall include timelines for corrective action, responsibilities of the individual administrator and the school district for implementing the plan, and specific support that the district shall provide as defined in N.J.S.A. 18A:6-119.

"Department" means the New Jersey Department of Education.

"Designated supervisor" means the supervisor designated by the Superintendent of Schools or designee as the administrator's supervisor.

"District Evaluation Advisory Committee" means a group created to oversee and guide the planning and implementation of the Board of Education's evaluation policies and procedures as set forth in N.J.A.C. 6A:10-2.3.

"Educator practice instrument" means an assessment tool that provides: scales or dimensions that capture competencies of professional performance; and differentiation of a range of professional performance as described by the scales, which must be shown in practice and/or research studies. The scores from educator practice instruments for teaching staff members other than teachers, Principals, Vice Principals, and Assistant Principals may be applied to the administrator's summative evaluation rating in a manner determined by the school district.

"Evaluation" means an appraisal of an individual's professional performance in relation to his or her job description, and professional standards, and Statewide evaluation criteria that incorporates analysis of multiple measures of student achievement or growth, if applicable, and multiple data sources based on, when applicable, the individual's evaluation rubric.

"Evaluation rubric" means a set of criteria, measures, and processes used to evaluate all administrators in a specific school district or local education agency. Evaluation rubrics consist of measures of professional practice, based on educator practice instruments and student outcomes. Each Board of Education will have an evaluation rubric specifically for teachers, another specifically for Principals, Vice Principals, and Assistant Principals, and evaluation rubrics for other categories of staff members.



REGULATION GUIDE

TEACHING STAFF MEMBERS
R 3223/page 3 of 15

Evaluation of Administrators, Excluding
Principals, Vice Principals, and
Assistant Principals

"Indicators of student progress and growth" means the results of assessment(s) of students as defined in N.J.A.C. 6A:8, Standards and Assessment.

"Individual professional development plan" is as defined in N.J.S.A. 18A:6-119.

"Job description" means a written specification of the function of a position, duties and responsibilities, the extent and limits of authority, and work relationships within and outside the school and school district.

~~"Model evaluation rubric" means district educator evaluation rubrics that have been reviewed and accepted by the Commissioner. A model teaching or principal evaluation rubric includes a teacher or principal practice instrument that appears on the Department's list of approved educator practice instruments.~~

"Observation" means a method of collecting data on the performance of an administrator's assigned duties and responsibilities. An observation for the purpose of evaluation will be included in the determination of the annual summative evaluation rating and shall be conducted by an individual employed in the school district in a supervisory role and capacity and possessing a school administrator, principal, or supervisor endorsement as defined in N.J.A.C. 6A:9-2.1 and as designated by the Superintendent or designee.

"Post-observation conference" means a meeting, either in-person or remotely, between a ~~Superintendent or designee~~ the supervisor who conducted the observation and the administrator for the purpose of evaluation to discuss the data collected in the observation.

"Scoring guide" means a set of rules or criteria used to evaluate a performance, product, or project. The purpose of a scoring guide is to provide a transparent and reliable evaluation process. Educator practice instruments include a scoring guide that an evaluator uses to structure his or her assessments and ratings of professional practice.

"Semester" means half of the school year.



REGULATION GUIDE

TEACHING STAFF MEMBERS
R 3223/page 4 of 15
Evaluation of Administrators, Excluding
Principals, Vice Principals, and
Assistant Principals

"Signed" means the name of one physically written by oneself or an electronic code, sound, symbol, or process attached to or logically associated with a record and executed or adopted by a person with the intent to sign the record.

~~"Student growth objective" means an academic goal that administrators and evaluators may set for groups of students.~~

"Superintendent" means Superintendent of Schools or Chief School Administrator.

"Supervisor" means an appropriately certified staff member, as defined in N.J.S.A. 18A:1-1, or Superintendent employed in the school district in a supervisory role and capacity, and possessing a school administrator, Principal, or supervisor endorsement, as defined in N.J.A.C. 6A:9B-124.

B. Applicability of Rules on Collective Bargaining Agreements - N.J.A.C. 6A:10-1.3

The rules in N.J.A.C. 6A:10-1.1 et seq. shall not override any conflicting provision(s) of collective bargaining agreements or other employment contracts entered into by a school district in effect on July 1, 2013. No collective bargaining agreement entered into after July 1, 2013, shall conflict with the educator evaluation system established pursuant to N.J.A.C. 6A:10-1.1 et seq. or any other specific statute or regulation, nor shall topics subject to bargaining involve matters of educational policy or managerial prerogatives.

C. Educator Evaluation Data, Information, and Written Annual Performance Reports - N.J.A.C. 6A:10-1.4

All information contained in written annual performance reports and all information collected, compiled, and/or maintained by employees of the Board of Education for the purposes of conducting the educator evaluation process pursuant to N.J.A.C. 6A:10-1.1 et seq., **including, but not limited to, digital records**, shall be confidential. Such information shall not be subject to public inspection or copying pursuant to the Open Public Records Act, N.J.S.A. 47:1A-1 et seq. Nothing contained in N.J.A.C. 6A:10-1.1 et seq. shall be construed to prohibit the Department or a school district from, at its discretion, collecting evaluation data pursuant to N.J.S.A. 18A:6-123.e or distributing aggregate statistics regarding evaluation data.



REGULATION GUIDE

TEACHING STAFF MEMBERS
R 3223/page 5 of 15
Evaluation of Administrators, Excluding
Principals, Vice Principals, and
Assistant Principals

D. Evaluation of Administrators – N.J.A.C. 6A:10-2.1

1. The Board of Education shall annually adopt evaluation rubrics for all administrators. The evaluation rubrics shall have four defined annual ratings: ineffective, partially effective, effective, and highly effective.
2. Evaluation rubrics shall be submitted to the Commissioner by June 1 for approval by August 1 of each year.

E. Duties of the Board of Education – N.J.A.C. 6A:10-2.2

1. The Board of Education shall meet the following requirements for the annual evaluation of administrators, unless otherwise specified:
 - a. Establish a District Evaluation Advisory Committee to oversee and guide the planning and implementation of the Board of Education's evaluation policies and procedures as set forth in N.J.A.C. 6A:10-2.4 et seq.;
 - b. Annually adopt policies and procedures developed by the Superintendent pursuant to N.J.A.C. 6A:10-2.4, including the evaluation rubrics approved by the Commissioner pursuant to N.J.A.C. 6A:10-2.1(c);
- (1) The Superintendent shall develop policies and procedures that, at a minimum, ensure student performance data on the Statewide assessment is, upon receipt, promptly distributed or otherwise made available to staff members who were primarily responsible for instructing the applicable students in the school year in which the assessment was taken, as well as to staff members who are or will be primarily responsible for instructing the applicable students in the subsequent school year.



REGULATION GUIDE

TEACHING STAFF MEMBERS
R 3223/page 6 of 15
Evaluation of Administrators, Excluding
Principals, Vice Principals, and
Assistant Principals

- c. Ensure the Superintendent annually notifies all administrators of the adopted evaluation policies and procedures no later than October 1. If an administrator is hired after October 1, the Board/Superintendent shall notify the administrator of the policies and procedures at the beginning of his or her employment. All administrators shall be notified of amendments to the policy and procedures within ten administrator working days of adoption;
- d. Annually adopt by June 1, any Commissioner-approved educator practice instruments and, as part of the process described at N.J.A.C. 6A:10-2.1(c), notify the Department which instruments will be used as part of the school district's evaluation rubrics;
- e. Ensure the Principal of each school within the school district has established a School Improvement Panel pursuant to N.J.A.C. 6A:10-3.1. The panel shall be established annually by August 31 and shall carry out the duties and functions described in N.J.A.C. 6A:10-3.2;
- f. Ensure data elements are collected and stored in an accessible and usable format. Data elements shall include, but not be limited to, scores or evidence from observations for the purpose of evaluation and student growth objective data; and
- g. Ensure the Superintendent or designee certifies to the Department that any observer who conducts an observation of an administrator for the purpose of evaluation as described in N.J.A.C. 6A:10-4.4; N.J.A.C. 6A:10-5.4; and N.J.A.C. 6A:10-6.2 shall meet the statutory observation requirements of N.J.S.A. 18A:6-119; 18A:6-123.b(8); and N.J.S.A. 18A:27-3.1 and the teacher member of the School Improvement Panel requirements of N.J.A.C. 6A:10-3.2.



REGULATION GUIDE

TEACHING STAFF MEMBERS
R 3223/page 7 of 15
Evaluation of Administrators, Excluding
Principals, Vice Principals, and
Assistant Principals

2. The Board of Education shall ensure the following training procedures are followed when implementing the evaluation rubric for all administrators and, when applicable, applying the Commissioner-approved educator practice instruments:
 - a. Annually provide training on and descriptions of each component of the evaluation rubric for all administrators who are being evaluated in the school district and provide more thorough training for any administrator who is being evaluated for the first time. Training shall include detailed descriptions of all evaluation rubric components including, when applicable, detailed descriptions of student achievement measures and all aspects of the educator practice instruments;
 - b. ~~Provide training on the educator practice instruments for any supervisor who will conduct observations for the purpose of evaluation of administrators. Training shall be provided before the observer conducts his or her first observation for the purpose of evaluation;~~
 - bo. Annually provide updates and refresher training on the educator practice instruments for any supervisors who will observe educator practice for the purpose of increasing accuracy and consistency among observers are conducting evaluations in the school district and more thorough training for any supervisor who will evaluate administrators for the first time. Training shall be provided on each component of the evaluated administrator's evaluation rubric before the evaluation of an administrator; and
 - cd. The Superintendent shall annually certify to the Department that all supervisors of administrators in the school district who are utilizing educator practice instruments evaluation rubrics have completed training on the instrument and its application and have demonstrated competency in applying the evaluation rubrics educator practice instruments.



REGULATION GUIDE

TEACHING STAFF MEMBERS
R 3223/page 8 of 15
Evaluation of Administrators, Excluding
Principals, Vice Principals, and
Assistant Principals

F. District Evaluation Advisory Committee -- N.J.A.C. 6A:10-2.3

1. Members of the District Evaluation Advisory Committee shall include representation from the following groups: teachers from each school level represented in the school district; central office administrators overseeing the teacher evaluation process; supervisors involved in teacher evaluation, when available or appropriate; and administrators conducting evaluations, including a minimum of one administrator conducting evaluations who participates on a School Improvement Panel. Members also shall include the Superintendent, a special education administrator, a parent, and a member of the Board of Education.
2. The Superintendent may extend membership on the District Evaluation Advisory Committee to representatives of other groups and to individuals.
3. Beginning in ~~2017-2018~~ 2018-2019, the District Evaluation Advisory Committees shall no longer be required and the Board of Education shall have the discretion to continue the District's Evaluation Advisory Committee.

G. Evaluation Procedures for Administrators -- N.J.A.C. 6A:10-2.4

1. The provisions outlined in Policy and Regulation 3223 and N.J.A.C. 6A:10-2.4 shall be the minimum requirements for the evaluation of administrators.
2. Evaluation policies and procedures requiring the annual evaluation of all administrators shall be developed under the direction of the Superintendent, who may consult with the District Evaluation Advisory Committee or representatives from School Improvement Panels, and shall include, but not be limited to, a description of:
 - a. Roles and responsibilities for implementation of evaluation policies and procedures;
 - b. Job descriptions, evaluation rubrics for administrators, the process for calculating the summative ratings and each component, and the evaluation regulations set forth in N.J.A.C. 6A:10 et seq.;



REGULATION GUIDE

TEACHING STAFF MEMBERS
R 3223/page 9 of 15
Evaluation of Administrators, Excluding
Principals, Vice Principals, and
Assistant Principals

- c. Methods of data collection and reporting appropriate to each job description, including, but not limited to, the process for student attribution to teachers, Principals, Vice Principals, and Assistant Principals for calculating the median and school-wide student growth percentile;
 - d. Processes for observations for the purpose of evaluation and post-observation conference(s) by a supervisor;
 - e. **Process for developing and scoring student growth objectives;**
 - fe. The process for preparation of individual professional development plans; and
 - gf. The process for preparation of an annual written performance report by the Superintendent or designated supervisor and an annual summary conference between the administrator and his or her the Superintendent—or designated supervisor.
3. ~~The annual summary conference between the Superintendent or designated supervisors and the administrator shall be held before the annual written performance report is filed. The conference shall occur on or before June 30 of each school year and shall include, but not be limited to, a review of the following:~~
- a. ~~The performance of the administrator based upon the job description and the scores or evidence compiled using the administrator's evaluation rubric, including, whenever applicable, the educator's practice instrument;~~
 - (1) **The administrator's practice instrument; and**
 - (2) **Available indicators or student achievement measures such as student growth objective scores and student growth percentile scores.**



REGULATION GUIDE

TEACHING STAFF MEMBERS
R 3223/page 10 of 15
Evaluation of Administrators, Excluding
Principals, Vice Principals, and
Assistant Principals

- b. The progress of the administrator toward meeting the goals of the individual professional development plan or, when applicable, the corrective action plan; and
 - c. ~~Available indicators or scores of student achievement or growth, when applicable, such as student growth objective scores and student growth percentile scores; and~~
 - cd. The preliminary annual written performance report.
4. If any scores for the administrator's evaluation rubric are not available at the time of the annual summary conference due to pending assessment results, the annual summative evaluation rating shall be calculated once all component ratings are available.
5. The annual written performance report for the administrator shall be prepared by the ~~Superintendent or~~ designated supervisor and shall include, but not be limited to:
- a. A summative rating based on the evaluation rubric;
 - b. Performance area(s) of strength and area(s) needing improvement based upon the job description, ~~observations for the purpose of evaluation and, when applicable, the educator practice instrument; and components of the administrator's evaluation rubric; and~~
 - c. ~~An~~ The administrator's individual professional development plan developed by the ~~Superintendent or designated supervisor and the administrator or, when applicable,~~ a corrective action plan from the evaluation year being reviewed in the report.
6. The administrator and the ~~Superintendent or~~ designated supervisor shall sign the report within five ~~administrator~~ working days of the review.



REGULATION GUIDE

TEACHING STAFF MEMBERS

R 3223/page 11 of 15

Evaluation of Administrators, Excluding
Principals, Vice Principals, and
Assistant Principals

7. The Board of Education shall include all written performance reports and supporting data, including, but not limited to, written observation reports and additional components of the summative evaluation rating as part of his or her personnel file, or in an alternative, confidential location. If reports and data are stored in an alternative, confidential location, the personnel file shall clearly indicate the report's location and how it can easily be accessed. The records shall be confidential and shall not be subject to public inspection or copying pursuant to the Open Public Records Act, N.J.S.A. 47:1A-1 et seq.

II. Corrective Action Plans for Administrators – N.J.A.C. 6A:10-2.5

1. For each administrator rated ineffective or partially effective on the annual summative evaluation, as measured by the evaluation rubrics, a corrective action plan shall be developed by administrator and the Superintendent or the designated supervisor. **If the administrator does not agree with the corrective action plan's content, the designated supervisor shall make a final determination.**
2. ~~If the summative evaluation rating is calculated before the end of the school year, then~~ The corrective action plan shall be developed and the administrator and the Superintendent or his or her designated supervisor shall meet to discuss the corrective action plan ~~prior to September 15 by~~ **October 31** of the following school year. ~~The conference to develop and discuss the corrective action plan may be combined with the administrator's annual summary conference that occurs at the end of the year of evaluation, following the year of evaluation except:~~
 - a3. If the ineffective or partially effective summative evaluation rating is received after ~~the start~~ **October 1** of the school year following the year of evaluation, then a corrective action plan ~~shall~~ **must** be developed, and the administrator and ~~his or her the Superintendent or~~ designated supervisor shall meet to discuss the corrective action plan within ~~twenty-five~~ **fifteen** administrator working days following the school district's receipt of the administrator's summative rating.



© Copyright 2017 • Straus Eerny Associates, LLP • 1886 Hinds Road • Suite 1 • Totin River, NJ 08753-8199 • 732-255-1600

REGULATION GUIDE

TEACHING STAFF MEMBERS
R 3223/page 12 of 15
Evaluation of Administrators, Excluding
Principals, Vice Principals, and
Assistant Principals

4. ~~The content of the corrective action plan shall replace the content of the individual professional development plan required in N.J.A.C. 6A:9C-3.4(e) and 3.7(e) until the next annual summary conference.~~
35. The content of the corrective action plan shall **replace the content of the individual professional development plan required pursuant to N.J.A.C. 6A:9C-4.3(a) and 4.4(a) and shall:**
- a. Address areas in need of improvement identified in the administrator evaluation rubric;
 - b. Include specific, demonstrable goals for improvement;
 - c. Include responsibilities of the evaluated employee and the school district for the plan's implementation; and
 - d. Include timelines for meeting the goal(s).
46. **The administrator's Superintendent or designated supervisor, and the administrator on a corrective action plan shall discuss the administrator's progress toward the goals outlined in the corrective action plan during each required post-observation conference. The administrator and his or her designated supervisor may update the goals outlined in the corrective action plan to reflect any change(s) in the administrator's progress, position, or role.**
57. Progress toward the administrator's goals outlined in the corrective action plan:
- a. **Shall be documented in the administrator's personnel file and reviewed at the annual summary conference and or the mid-year evaluation, when applicable. Both the administrator on a corrective action plan and the Superintendent or his or her designated supervisor may collect data and evidence to demonstrate the administrator's progress toward his or her corrective action plan goals; and**



REGULATION GUIDE

TEACHING STAFF MEMBERS

R 3223/page 13 of 15

Evaluation of Administrators, Excluding Principals, Vice Principals, and Assistant Principals

- ~~h8. Progress toward the administrator's goals outlined in the corrective action plan may be used as evidence in the administrator's next annual summative evaluation; however, such progress shall not guarantee an effective rating on the next summative evaluation.~~
69. Responsibilities of the evaluated administrator on a corrective action plan shall not be exclusionary of other plans for improvement determined to be necessary by the ~~Superintendent or~~ administrator's designated supervisor.
740. The corrective action plan shall remain in effect until the administrator receives his or her next summative evaluation rating.
8. **There shall be no minimum number of administrator working days an administrator's corrective action plan can be in place.**
- I. Administrator Observations and Evaluations - N.J.A.C. 6A:10-6.2
1. The Superintendent shall determine the duration of observations required pursuant to N.J.S.A. 18A:27-3.1 for nontenured administrators. Observations include, but are not limited to, observations of meetings, student instruction, parent conferences, and case-study analysis of a significant student issue. The observation shall:
- Be at least twenty minutes in length;
 - Be followed within fifteen administrator working days by a conference between the supervisor who made the observation and the nontenured administrator;
 - Be followed by both parties to such a conference signing the written or electronic observation report and each retaining a copy of his or her records; and
 - Allow the nontenured administrator to submit his or her written objection(s) of the evaluation within ten administrator working days following the conference. The objection(s) shall be attached to each party's copy of the annual performance report.



© Copyright 2017 • Straess Earmay Associates, LLP • 1000 Hinds Road • Suite 1 • Toms River, NJ 08753-8190 • 732-255-1500

REGULATION GUIDE

TEACHING STAFF MEMBERS
R 3223/page 14 of 15
Evaluation of Administrators, Excluding
Principals, Vice Principals, and
Assistant Principals

2. All tenured administrators shall receive at least one observation per school year.
3. All nontenured administrators shall receive at least three observations, as required pursuant to N.J.S.A. 18A:27-3.1.
- ~~2. Each nontenured administrator shall be observed and evaluated in the performance of his or her duties at least three times during each school year but not less than once during each semester.~~
- ~~3. Each tenured administrator shall be observed and evaluated in the performance of his or her duties at least once each school year. The Superintendent shall determine the duration of the observation.~~
- ~~4. Observations include, but are not limited to: observations of meetings, student instruction, parent conferences, and a case study analysis of a significant student issue.~~
- ~~5. Each observation shall be followed within fifteen administrator working days by a conference between the Superintendent or designated supervisor who made the observation and written or electronic evaluation and the administrator. Both parties to such a conference shall sign the written or electronic evaluation report and each shall retain a copy for his or her records. The purpose of this procedure is to recommend as to reemployment, identify any deficiencies, extend assistance for correction, and improve professional competence.~~
- ~~6. The administrator may submit his or her written objection(s) of the evaluation within ten administrator working days following the conference. The objection(s) shall be attached to each party's copy of the annual written performance report.~~
 - a7. The required observations and evaluations for nontenured administrators shall take place before April 30 each year. These observations and evaluations may cover that period between April 30 of one year and April 30 of the succeeding year except in the case of the first year of employment where the three evaluations and observations must have been completed prior to April 30.



REGULATION GUIDE

TEACHING STAFF MEMBERS

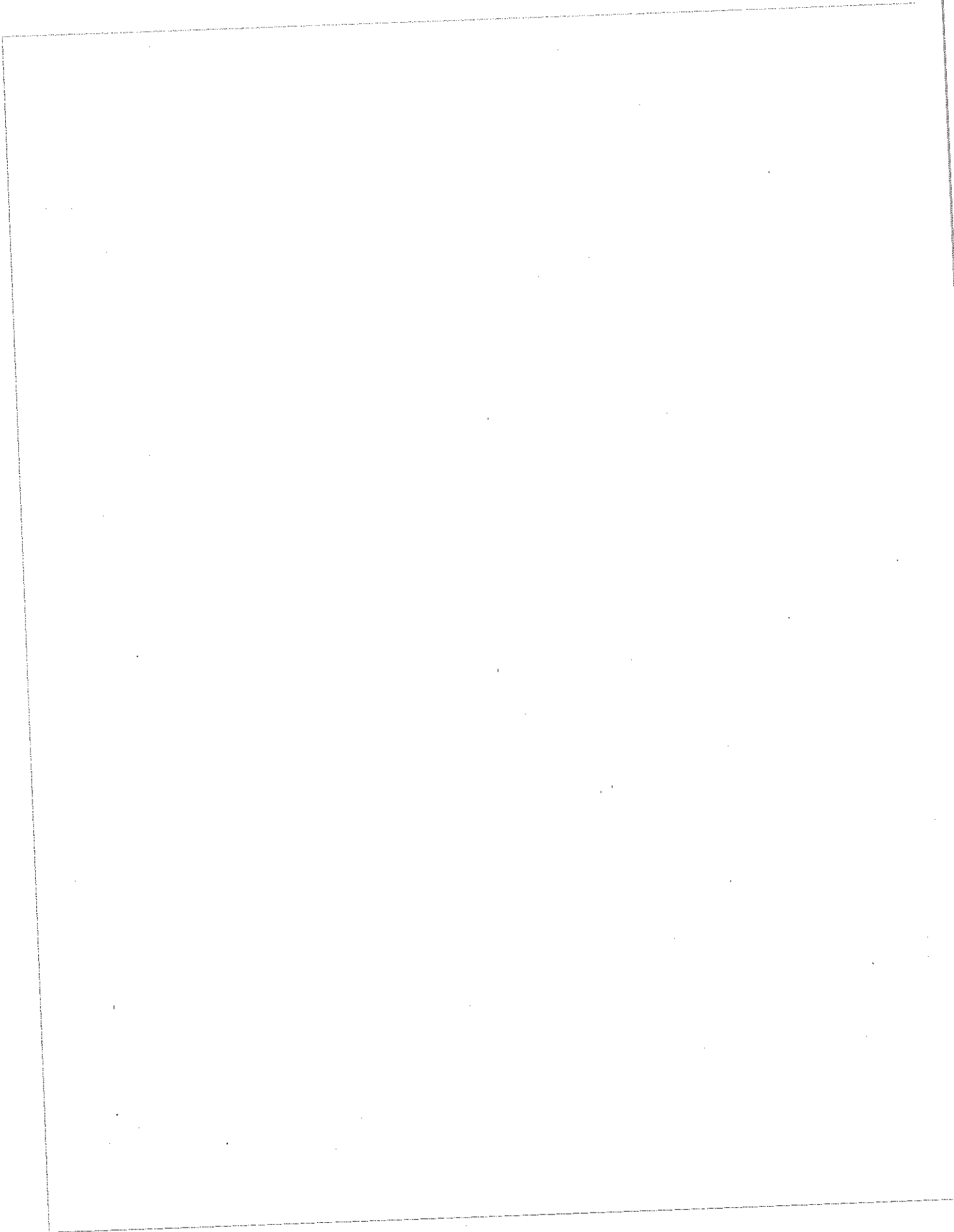
R 3223/page 15 of 15

Evaluation of Administrators, Excluding
Principals, Vice Principals, and
Assistant Principals

- b8. The number of required observations and evaluations for nontenured administrators may be reduced proportionately when an individual administrator's term of service is less than one academic year.
49. Evaluations for tenured administrators shall be completed prior to June 30.

Adopted: 19 January 2016





POLICY GUIDE

TEACHING STAFF MEMBERS
3224/page 1 of 2
Evaluation of Principals, Vice Principals,
and Assistant Principals
May 17
M

[See POLICY ALERT Nos. 201, 207 and 212]

3224 EVALUATION OF PRINCIPALS, VICE PRINCIPALS, AND ASSISTANT PRINCIPALS

The Board of Education recognizes the importance of Principal, Vice Principal, and Assistant Principal effectiveness to further the development of a professional corps of educators and to increase student achievement. The Board of Education adopts Policy and Regulation 3224 for the evaluation of Principals, Vice Principals, and Assistant Principals consistent with the Teacher Effectiveness and Accountability for the Children of New Jersey Act (TEACHNJ) and the AchieveNJ administrative codes. This Policy and Regulation provides the provisions and requirements for Principal, Vice Principal, and Assistant Principal evaluations consistent with TEACHNJ and AchieveNJ.

The rules in N.J.A.C. 6A:10 – Educator Effectiveness shall not override any conflicting provision(s) of collective bargaining agreements or other employment contracts in effect on July 1, 2013 and no collective bargaining agreement entered into after July 1, 2013, shall conflict with the educator evaluation system established pursuant to N.J.A.C. 6A:10-1.1 et seq. or any other specific statute or regulation, nor shall topics subject to bargaining involve matters of educational policy or managerial prerogatives. All information contained in annual written performance reports and all information collected, compiled, and/or maintained by employees for the evaluation process pursuant to N.J.A.C. 6A:10-1.1 et seq. shall be confidential and shall not be subject to public inspection or copying pursuant to the Open Public Records Act, N.J.S.A. 47:1A-1 et seq.

The Board shall annually adopt evaluation rubrics for Principals, Vice Principals, and Assistant Principals which shall be submitted to the Commissioner by June 1 for approval by August 1 of each year. The evaluation rubrics shall have four defined annual ratings: ineffective, partially effective, effective, and highly effective. The Board shall meet the requirements as outlined in N.J.A.C. 6A:10-2.2(a) for the annual evaluation of Principals, Vice Principals, and Assistant Principals and shall ensure the training procedures as outlined in N.J.A.C. 6A:10-2.2(b) are followed when implementing the evaluation rubrics for all Principals, Vice Principals, or Assistant Principals. A District Evaluation Advisory Committee shall be established in accordance with the requirements of N.J.A.C. 6A:10-2.3.



POLICY GUIDE

TEACHING STAFF MEMBERS

3224/page 2 of 2

Evaluation of Principals, Vice Principals, and Assistant Principals

The minimum requirements for the evaluation procedures for Principals, Vice Principals, and Assistant Principals as outlined in N.J.A.C. 6A:10-2.4 shall be followed. For each Principal, Vice Principal, or Assistant Principal rated ineffective or partially effective on the annual summative evaluation rating, as measured by the evaluation rubrics, a corrective action plan shall be developed in accordance with the provisions of N.J.A.C. 6A:10-2.5.

The components of the principal evaluation rubrics as described in N.J.A.C. 6A:10-5.1 shall apply to Principals, Vice Principals, and Assistant Principals. Measures of student achievement, as outlined in N.J.A.C. 6A:10-5.2, shall be used to determine impact on student learning. Principal, Vice Principal, and Assistant Principal observations shall be conducted in accordance with the provisions of N.J.A.C. 6A:10-5.4. The Superintendent or designated supervisor shall conduct observations for the evaluation of Principals pursuant to N.J.S.A. 18A:6-121 and he or she shall be trained pursuant to N.J.A.C. 6A:10-2.2(b). A Principal, or the Superintendent or designated supervisor, shall conduct observations for the evaluation of Vice Principals and Assistant Principals pursuant to N.J.S.A. 18A:6-121.

The principal practice instrument approved by the Department of Education shall meet the criteria as outlined in N.J.A.C. 6A:10-7.3.

The Superintendent annually shall notify all Principals, Vice Principals, or Assistant Principals of the adopted evaluation policies and procedures/regulations no later than October 1. If a Principal, Vice Principal, or Assistant Principal is hired after October 1, the Superintendent shall notify the Principal, Vice Principal, or Assistant Principal of the policies and procedures/regulations at the beginning of his or her employment. All Principals, Vice Principals, and Assistant Principals shall be notified of amendments to the policy and procedures/regulations within ten Principal, Vice Principal, or Assistant Principal working days of adoption.

N.J.S.A. 18A:6-117 et seq.

N.J.A.C. 6A:10-1.1 through 1.4; 6A:10-2.1 through 2.5

N.J.A.C. 6A:10-5.1 through 5.4

N.J.A.C. 6A:10-7.1 and 7.3

Adopted:

15 December 2015
19 January 2016

© Copyright 2017 • Strauss Eernay Associates, LLP • 1550 Hinds Road • Suite 1 • Toms River, NJ 08753-8199 • 732-255-1500



REGULATION GUIDE

TEACHING STAFF MEMBERS
R 3224/page 1 of 23
Evaluation of Principals, Vice Principals,
and Assistant Principals
May 17
M

[See POLICY ALERT Nos. 201, 207 and 212]

R 3224 EVALUATION OF PRINCIPALS, VICE PRINCIPALS, AND ASSISTANT PRINCIPALS

A. Definitions – N.J.A.C. 6A:10-1.2

The following words and terms shall have the following meanings when used in Policy and Regulation 3224 unless the context clearly indicates otherwise:

“Annual performance report” means a written appraisal of the Principal’s, Vice Principal’s, or Assistant Principal’s performance prepared by the designated supervisor based on the evaluation rubric for his or her position.

“Annual summative evaluation rating” means an annual evaluation rating that is based on appraisals of educator practice and student performance, and includes all measures captured in a Principal, Vice Principal, or Assistant Principal evaluation rubric. The four summative performance categories are ineffective, partially effective, effective, and highly effective.

“Calibration” in the context of educator evaluation means a process to monitor the competency of a trained evaluator to ensure the evaluator continues to apply an educator practice instrument accurately and consistently according to the standards and definitions of the specific instrument.

“Chief School Administrator” means the Superintendent of Schools or the Administrative Principal if there is no Superintendent.

“Commissioner” means Commissioner of the New Jersey Department of Education.



REGULATION GUIDE

TEACHING STAFF MEMBERS

R 3224/page 2 of 23

Evaluation of Principals, Vice Principals,
and Assistant Principals

"Corrective Action Plan" means a written plan developed by the Superintendent or a ~~designated supervisor~~ ~~designee~~ in collaboration with the Principal, Vice Principal, and Assistant Principal to address deficiencies as outlined in an evaluation. The corrective action plan shall include timelines for corrective action, responsibilities of the individual Principal, Vice Principal, and Assistant Principal and the school district for implementing the plan, and specific support that the district shall provide as defined in N.J.S.A. 18A:6-119.

"Department" means the New Jersey Department of Education.

"Designated supervisor" means the supervisor designated by the Superintendent of Schools or ~~designee as the administrator's as the Principal's, Vice Principal's, or Assistant Principal's~~ supervisor.

"District Evaluation Advisory Committee" means a group created to oversee and guide the planning and implementation of the Board of Education's evaluation policies and procedures as set forth in N.J.A.C. 6A:10-2.3.

"Educator practice instrument" means an assessment tool that provides: scales or dimensions that capture competencies of professional performance; and differentiation of a range of professional performance as described by the scales, which must be shown in practice and/or research studies.

"Evaluation" means an appraisal of an individual's professional performance in relation to his or her job description, and professional standards, and ~~Statewide evaluation criteria that incorporates analysis of multiple measures of student achievement or growth and multiple data sources based on, when applicable, the individual's evaluation rubric.~~

"Evaluation rubric" means a set of criteria, measures, and processes used to evaluate all Principals, Vice Principals, and Assistant Principals in a specific school district or local education agency. Evaluation rubrics consist of measures of professional practice, based on educator practice instruments and student outcomes. Each Board of Education will have an evaluation rubric specifically for teachers, another specifically for Principals, Vice Principals, and Assistant Principals, and evaluation rubrics for other categories of teaching staff members.



REGULATION GUIDE

TEACHING STAFF MEMBERS
R 3224/page 3 of 23
Evaluation of Principals, Vice Principals,
and Assistant Principals

"Indicators of student progress and growth" means the results of assessment(s) of students as defined in N.J.A.C. 6A:8, Standards and Assessment.

"Individual professional development plan" is as defined in N.J.S.A. 18A:6-119.

"Job description" means a written specification of the function of a position, duties and responsibilities, the extent and limits of authority, and work relationships within and outside the school and school district.

~~"Model evaluation rubric" means district educator evaluation rubrics that have been reviewed and accepted by the Commissioner. A model teaching or principal evaluation rubric includes a teacher or principal practice instrument that appears on the Department's list of approved educator practice instruments.~~

"Observation" means a method of collecting data on the performance of a Principal's, Vice Principal's, and Assistant Principal's assigned duties and responsibilities. An observation for the purpose of evaluation will be included in the determination of the annual summative evaluation rating and shall be conducted by the Superintendent or designee.

"Post-observation conference" means a meeting, either in-person or remotely, between the Superintendent or the designated supervisor who conducted the observation and the Principal, Vice Principal, and Assistant Principal for the purpose of evaluation to discuss the data collected in the observation.

"Principal practice instrument" means an assessment tool that provides scales or dimensions that capture competencies of professional performance; and differentiation of a range of professional performance as described by the scales, which must be shown in practice and/or research studies. The scores from the principal practice instrument are components of the evaluation rubrics and the scores are included in the summative evaluation rating for the individual.

"Scoring guide" means a set of rules or criteria used to evaluate a performance, product, or project. The purpose of a scoring guide is to provide a transparent and reliable evaluation process. Educator practice instruments include a scoring guide that an evaluator uses to structure his or her assessments and ratings of professional practice.



© Copyright 2017 • Strauss Emery Associates, LLP • 1800 Hinds Road • Suite 1 • Toms River, NJ 08753 • 8109 • 732-258-1600

✘ Please wait while OneNote loads this Printout...

✕ Please wait while OneNote loads this Printout...

✘ Please wait while OneNote loads this Printout...

✘ Please wait while OneNote loads this Printout...

✘ Please wait while OneNote loads this Printout...

✘ Please wait while OneNote loads this Printout...

X Please wait while OneNote loads this Printout...

✘ Please wait while OneNote loads this Printout...

✘ Please wait while OneNote loads this Printout...

✘ Please wait while OneNote loads this Printout...

X Please wait while OneNote loads this Printout...

✘ Please wait while OneNote loads this Printout...

✘ Please wait while OneNote loads this Printout...

✕ Please wait while OneNote loads this Printout...

✘ Please wait while OneNote loads this Printout...

X Please wait while OneNote loads this Printout...

X Please wait while OneNote loads this Printout...

✘ Please wait while OneNote loads this Printout...

X Please wait while OneNote loads this Printout...

✘ Please wait while OneNote loads this Printout...

X Please wait while OneNote loads this Printout...

✘ Please wait while OneNote loads this Printout...

✕ Please wait while OneNote loads this Printout...

✘ Please wait while OneNote loads this Printout...

✕ Please wait while OneNote loads this Printout...

X Please wait while OneNote loads this Printout...

✘ Please wait while OneNote loads this Printout...

✕ Please wait while OneNote loads this Printout...

✘ Please wait while OneNote loads this Printout...

✘ Please wait while OneNote loads this Printout...

✘ Please wait while OneNote loads this Printout...

✘ Please wait while OneNote loads this Printout...

✕ Please wait while OneNote loads this Printout...

✘ Please wait while OneNote loads this Printout...

✘ Please wait while OneNote loads this Printout...

✘ Please wait while OneNote loads this Printout...

X Please wait while OneNote loads this Printout...

✕ Please wait while OneNote loads this Printout...

✘ Please wait while OneNote loads this Printout...

X Please wait while OneNote loads this Printout...

✘ Please wait while OneNote loads this Printout...

✘ Please wait while OneNote loads this Printout...

✘ Please wait while OneNote loads this Printout...

X Please wait while OneNote loads this Printout...

X Please wait while OneNote loads this Printout...

✘ Please wait while OneNote loads this Printout...

X Please wait while OneNote loads this Printout...

X Please wait while OneNote loads this Printout...

✘ Please wait while OneNote loads this Printout...

✘ Please wait while OneNote loads this Printout...

✘ Please wait while OneNote loads this Printout...

✘ Please wait while OneNote loads this Printout...

✕ Please wait while OneNote loads this Printout...

✕ Please wait while OneNote loads this Printout...

✘ Please wait while OneNote loads this Printout...

✘ Please wait while OneNote loads this Printout...

✘ Please wait while OneNote loads this Printout...

✕ Please wait while OneNote loads this Printout...

✕ Please wait while OneNote loads this Printout...

✘ Please wait while OneNote loads this Printout...

X Please wait while OneNote loads this Printout...

X Please wait while OneNote loads this Printout...

X Please wait while OneNote loads this Printout...

X Please wait while OneNote loads this Printout...

Document I - Policies for 1st Reading

Monday, June 12, 2017 3:19 PM

POLICY GUIDE

PROPERTY
7424/page 1 of 2
Bed Bugs
May 17

[See POLICY ALERT No. 212]

7424 BED BUGS

The Board of Education is concerned for students who may have bed bugs in their home with the potential for these students to bring bed bugs into the school building. Bed bugs can be transmitted from one location to another in backpacks, clothing, books, and other items. A bed bug infestation is unlikely in a school and the Board adopts this Policy as a proactive action to prevent infestation and to stop bed bugs from spreading within the school setting if a bed bug is transmitted into a school.

Bed bugs are parasitic insects that feed exclusively on blood and are mainly active at night, but are not exclusively nocturnal. A common bed bug prefers human blood and typically feeds on their hosts without being noticed. Bed bugs are not known to transmit disease, but cause reasonable distress and health concerns for many people. The presence of bed bugs in a home does not mean the home is unclean, bed bugs can be found in any home.

Bed bugs typically do not infest people as they hide during the day and come out during the night. Bed bugs are attracted to humans primarily by carbon dioxide, warmth, and by some chemicals. Bed bugs prefer exposed skin, preferably the face, neck, and arms of a sleeping person. Bed bug bites may lead to a range of skin manifestations from no visible effects to prominent blisters. The bite usually produces a swelling with no red spots, but when many bugs feed on a small area, reddish spots may appear after the swelling subsides. Effects also may include skin rashes, psychological effects, and allergic symptoms.

Any staff member who observes what may be bed bug bites on a student shall send the student to the school nurse. The school nurse shall examine the student to determine if there are any bed bugs present on the student or if the bites may be bed bug bites. The school nurse will inform the Principal and contact the student's parent on the results of the examination.

In the event the school nurse observes what appears to be a bed bug on the student or on the student's possessions, the school nurse will inform the Principal who will arrange for a licensed pest management professional to complete an inspection of the student's classroom(s) to determine if bed bugs are present in the classroom area. If a licensed pest management professional cannot complete an inspection within twenty-four hours of the request from the school district, the district custodial staff will vacuum the student's classroom(s) with a vacuum cleaner using a new vacuum cleaner bag and when finished the staff member shall



POLICY GUIDE

PROPERTY
7424/page 2 of 2
Bed Bugs

seal the bag and discard it in a receptacle outside the school building. If the vacuum does not have a bag, the contents of the vacuum shall be emptied into a secure plastic bag, sealed, and discarded into a receptacle outside the school building. The Principal shall determine if the classroom(s) should be occupied by staff and students until the inspection by a licensed pest management professional is conducted.

In the event the inspection determines bed bugs are in the school, the area(s) where bed bugs have been found or could be found will be treated by a licensed pest management professional.

The parent of any student who is found to have a live bed bug on them will be contacted by the school nurse and the parent will be required to pick-up their child to arrange for the child to return home to change clothes and to inspect any items the student brings to school. Upon the student's return to school, the student will be required to report to the school nurse who will examine the child and the child's possessions. If there are no signs of bed bugs on the student or in or on the student's possessions, the student will be able to resume their school day. The school nurse may determine to examine the child subsequent to their initial return to school to ensure the student and possessions are free of bed bugs. In the event the nurse finds live bed bugs on the student or in or on the student's possessions upon the student's initial return to school, or upon any subsequent examination by the school nurse, the school nurse will contact the parent and require the parent to pick-up the student from school.

The Principal, in consultation with the school nurse, will determine if the parents of other students should be informed of the presence of bed bugs in an area of the school where their child may have been or is during the school day. This determination will be made on a case-by-case basis. Parents of other students may not be informed if bed bugs are found on a student or in or on the student's possessions, and are not found in the school building. The school district will comply with all notification requirements and other requirements of the New Jersey Pest Management Act, the district's Pest Management Plan, and any other applicable law.

Any student suspected of having bed bugs in their home or on or in their possessions will be treated with discretion, dignity, and respect. The district will offer the student counseling, if needed. The Principal or designee will work sensitively with parents of any student living in an infested home to develop strategies for preventing the further spread of bed bugs.

Adopted:



© Copyright 2017 • Strauss Esmay Associates, LLP • 1886 Hinds Road • Suite 1 • Toms River, NJ 08753 - 8199 • 732-265-1500

REGULATION GUIDE

PROPERTY
R 7424/page 1 of 3
Bed Bugs
May 17

[See POLICY ALERT No. 212]

R 7424 BED BUGS

The following procedures are established in implementation of Policy 7424 – Bed Bugs.

A. Observation of Possible Bed Bug Bites or Bed Bugs on a Student

1. A staff member who observes what he/she believes may be bed bug bites on a student or bed bugs on the student or in or on the student's possessions shall send the student to the school nurse.
2. The school nurse shall examine the student to determine if the student has bed bug bites or if there are any bed bugs present on the student or in or on the student's possessions.
3. If the school nurse determines the student does not have bed bug bites or bed bugs on them or in or on their possessions, the student will be returned to resume their school day.

B. Confirmation of Bed Bug Bites or Bed Bugs on a Student

1. If the school nurse believes the student has bed bug bites or finds bed bugs on the student or in or on the student's possessions, the school nurse will contact the Principal or designee.
2. The Principal or designee will arrange for a licensed pest management professional to complete an inspection of the student's classroom(s) to determine if bed bugs are present.
3. If a licensed pest management professional cannot complete an inspection within twenty-four hours of the request from the school district, the district custodial staff will vacuum the student's classroom(s) with a vacuum cleaner using a new vacuum cleaner bag.
4. When vacuuming is completed by district custodial staff, the staff member shall seal the bag and discard it in a receptacle outside the school building. If the vacuum does not have a bag, the contents of the vacuum shall be emptied into a secure plastic bag, sealed, and discarded into a receptacle outside the school building. The vacuum will also be treated.



© Copyright 2017 • Strauss Esmay Associates, LLP • 1886 Hinds Road • Suite 1 • Toms River, NJ 08753-8199 • 732-255-1600

REGULATION GUIDE

PROPERTY
R 7424/page 2 of 3
Bed Bugs

5. The Principal shall determine if the classroom(s) should be occupied by staff and students until the inspection by a licensed pest management professional is conducted.

C. Inspection by Licensed Pest Management Professional

1. If an inspection by the licensed pest management professional determines bed bugs are not present in the classroom(s) inspected, the school program shall resume use of the classroom(s) if the Principal previously decided the classroom(s) should not be occupied by staff or students.
2. If an inspection by the licensed pest management professional determines bed bugs are in the classroom(s), the area(s) will be treated by a licensed pest management professional. Any treatment shall be in accordance with the provisions of the New Jersey Pest Management Act, the district's Pest Management Plan, and any other applicable law.

D. Communication with Student's Parent

1. The school nurse will contact the student's parent on the results of the examination.
2. A parent of a student who is believed to have a live bed bug(s) on them or in or on their possessions will be required to arrange for their child to be picked-up from school to return home to change clothes and for the parent to inspect any possessions the student brings to school. The nurse may provide the parent with information regarding bed bugs.

- a. Upon the student's return to school after being sent home to change clothes and an inspection of their possessions they bring to school, the student will be required to report to the school nurse who will examine the child and the child's possessions before the child can resume the school day.

- (1) If there are no signs of bed bugs on the student or in or on the student's possessions upon being examined by the school nurse after the child returns to school, the student will be able to resume their school day.



© Copyright 2017 • Strauss Esmay Associates, LLP • 1886 Hinds Road • Suite 1 • Toms River, NJ 08753-8199 • 732-255-1500

REGULATION GUIDE

PROPERTY
R 7424/page 3 of 3
Bed Bugs

b. The school nurse may examine the student and the student's possessions subsequent to their initial return to school to ensure the student and possessions are free of bed bugs.

(1) In the event the nurse finds live bed bugs on the student or in or on the student's possession after the student's initial return to school or upon any subsequent examination by the school nurse, the school nurse will contact the parent and require the parent to pick-up the student from school.

3. A parent of a student who is believed to have bed bug bites, but no evidence of bed bugs on them or in or on their possessions, will be informed of such results and the student may be required to be examined by the school nurse subsequent to the initial examination to ensure bed bugs are not on the student or in or on their possessions they bring to school.

E. School Communications

1. The Principal, in consultation with the school nurse, will determine if the parents of other students should be informed if bed bugs are found in an area of the school. This determination will be made on a case-by-case basis.

a. Parents of other students need not be informed if bed bugs are found on a student or in or on the student's possessions, and are not found in the school building.

F. Compliance with Applicable Laws

1. The Principal or designee will ensure the school district complies with all notification requirements and any other legal requirements, including the New Jersey Pest Management Act, the district's Pest Management Plan, and any other applicable law.

Issued:



© Copyright 2017 • Strauss Esmay Associates, LLP • 1886 Hinds Road • Suite 1 • Toms River, NJ 08753-8199 • 732-255-1500

POLICY GUIDE

PROPERTY
7461/page 1 of 9
District Sustainability Policy
May 17

[See POLICY ALERT No. 212]

7461 DISTRICT SUSTAINABILITY POLICY

Sustainability is defined as meeting the needs of the present without compromising the ability of future generations to meet their own needs. It considers the interrelationship of economic, social, and environmental factors that protect and enhance present and future quality of life.

The Board of Education desires to conduct its operations and make decisions with identified sustainability priorities that include at a minimum: protecting students, staff, and community from environmental harm; preparing students for the future by educating for sustainability (knowledge of concepts and practices of environmental, social, and economic responsibility and sustainability); and include an intent to preserve current and future resources.

The Board believes by incorporating sustainable practices into school policies and operations it can make an immediate impact on student health, academic performance, and teacher retention while decreasing operational costs and demands on natural resources.

The Superintendent of Schools will establish a School District Sustainability Committee to provide the Superintendent and the Board with information on the benefits of increased sustainability practices within the school district.

The Board wants to protect students, staff, school visitors, and community members from environmental harm and will strive to eliminate the use of potentially toxic and harmful substances; prepare students for the future by providing a high-quality education that support concepts and practices of environmental, social, and economic responsibility and sustainability; and preserving current and future resources by adopting practices in operations that balance environmental, social, and fiscal responsibility to protect and enhance the future quality of life.

[Optional - Select Any Additional Sustainability Policy Provisions to be Practiced in the School District

The Board of Education authorizes the following sustainability practices to be implemented within the schools of the district:



© Copyright 2017 • Strauss Esmay Associates, LLP • 1888 Hinds Road • Suite 1 • Toms River, NJ 08753 - 8199 • 732-266-1500

POLICY GUIDE

PROPERTY
7461/page 2 of 9
District Sustainability Policy

✓ Professional Development for Sustainability

Quality professional development of staff and Board members facilitates the effective transition to sustainability planning and practices for schools and school districts. Enhancing the knowledge of school personnel about the benefits and requirements of sustainability practices in a school setting increases the likelihood of a successful integration of sustainability into the school district's operations and promotes shared ownership of the outcomes.

The Board of Education will provide a minimum of two hours of time for professional development on sustainability topics to at least five members of the school district staff and/or members of the School District Sustainability Committee to include, but not be limited to, school Board members, district administrative staff members, teaching staff members, and support staff members.

The professional development for sustainability will provide a general understanding of the benefits of sustainable schools as well as specific information and guidance on undertaking some aspect of sustainability practices from planning to operations. The School District Sustainability Committee, Board members, district administrators, and other school staff members will work together to identify Board members and staff members that would benefit from training on sustainability topics. Training needs will be determined based on plans to maintain, implement, or expand sustainable practices in the school district.

Once the training needs have been identified, various professional development offerings will be reviewed and evaluated to determine the learning concepts that will be included, the educational methods that will be incorporated, and the professional skills that will be imparted. Professional development that incorporates sustainability concepts across subject areas in the teaching curriculum will be a key consideration, as educating for sustainability lays the foundation for sustainable thinking and practice among students, staff, and the broader community.

The school district may choose to train multiple staff members on a particular sustainability topic, either by hosting the training internally or by sending a group to an external training event such as a professional association meeting. Outside experts or internal staff with expertise in sustainability may also be utilized to provide the training. The training hours may also be completed through webinars, online courses, or workshops. Individual staff members or Board members may be trained in different sustainability topics as relevant to their official role in the school district.



© Copyright 2017 • Strauss Esmay Associates, LLP • 1886 Hinds Road • Suite 1 • Toms River, NJ 08753 - 8199 • 732-255-1500

POLICY GUIDE

PROPERTY
7461/page 3 of 9
District Sustainability Policy

The school district will maintain sustainability training documentation that identifies the names and position of the individuals receiving training (groups of five individuals are recommended), along with the following course information: date, instructor or course provider, course description or syllabus, and course length. Course training times exclude time for breaks and meals from the two-hour training requirement. The two hour training requirement does not have to be completed at a single event. For example, two one-hour training sessions or three forty-five minute sessions would meet the time requirement. The training hours must have occurred in the twenty-four months prior to submission for Sustainable Jersey for Schools certification, if such certification is desired.

Qualifying training includes courses or workshops on a topic related to sustainability in schools, from leadership, planning, policy, and curriculum development to teaching, enrichment, food service, transportation, and facilities management.

Green Purchasing Policy

Green purchasing, also known as Environmentally Preferable Purchasing (EPP), is the coordinated purchasing of goods and services to minimize impacts on human health and the natural environment. Alternatives exist for many products used by schools that are less hazardous, save energy and water, and reduce waste.

A simple first step will be for the school district to purchase as many products as possible made from recycled content that are themselves recyclable. Green purchasing moves beyond recycled materials and also takes into consideration the raw materials, including energy and water, used to manufacture products; the production process itself; the packaging and distribution method; and the distance of transport and proximity of production.

The School Business Administrator/Board Secretary or designee will provide an outline of the standards and procedures for selecting products based on environmental criteria. The specific standards and guidelines for selecting products will be based on established environmental criteria, as well as promote the adoption of this Policy to district staff members. The district will attempt to purchase, in accordance with the provisions of applicable purchasing laws: green cleaning supplies; green cleaning equipment; recycled paper; energy efficient appliances; and/or equipment purchases and green cleaning training.



© Copyright 2017 • Strauss Esmay Associates, LLP • 1886 Hinds Road • Suite 1 • Toms River, NJ 08753 - 8199 • 732-255-1500

POLICY GUIDE

PROPERTY
7461/page 4 of 9
District Sustainability Policy

✓ Classroom Chemical Purchase, Storage, and Disposal Policy

The Board of Education requires outdated chemicals used in the school district as part of the school district's Chemical Hygiene Plan are routinely removed from school grounds and future purchases will attempt to curtail or eliminate storage of unneeded chemicals. The School Business Administrator/Board Secretary will coordinate a lab clean-out and clean-out of outdated and unneeded chemicals every eighteen months.

Classroom chemical purchase, storage, and disposal will be in accordance with Board of Education Policy 7420 – Hygienic Management and Regulation 7420.2 – Chemical Hygiene that is in accordance with Federal and State law.

✓ Green Cleaning Policy and Plan

A well-designed Green Cleaning Program developed by the School Business Administrator/Board Secretary or designee will be designed to reduce harmful chemical exposure and yield positive benefits for students, custodial staff, administrators, teachers, and the environment by protecting the environment; providing a healthy learning and work environment; increasing the lifespan of facilities; and protecting the health of custodial, maintenance, and building staff.

This Policy incorporates recommendations from the district's Green Cleaning Plan which will commit to procuring and using green cleaning products and green equipment, support training for custodial and maintenance staff, and describe efforts to evaluate and monitor progress. This Green Cleaning Policy will be shared with the administration, school staff members, and the broader school community. Before adopting this Green Cleaning Policy, the district will develop a Green Cleaning Plan or Green Cleaning Action Plan that will inform the Policy and support an effective program.

The school district's Green Cleaning Program will incorporate green cleaning products and equipment as well as staff training; engage parents, students, and school organizations in the program implementation; and follow a comprehensive plan that articulates strategies for key building areas including classrooms, kitchens, gymnasiums, offices, and entry systems. In addition to the use of Green Cleaning products, the district's Green Cleaning Program will incorporate technologies like microfiber cloths to reduce the use of cleaning chemicals and HEPA-filtered vacuum cleaners to promote healthy indoor air quality.



© Copyright 2017 • Strauss Esmay Associates, LLP • 1886 Hinds Road • Suite 1 • Toms River, NJ 08753 - 8199 • 732-255-1500

POLICY GUIDE

PROPERTY
7461/page 5 of 9
District Sustainability Policy

The School Business Administrator/Board Secretary or designee will establish a District Green Cleaning workgroup that includes administrators, facility manager, custodial and maintenance staff, teachers, school nurses, support staff, parents, and Green Team members, as well as other individuals interested in Green Cleaning to familiarize the team with Green Cleaning Program components, including Green Cleaning supplies and equipment, as well as the relationship to indoor air quality, chemical exposure, and cost-saving opportunities.

The development of the district's Green Cleaning Plan or Green Cleaning Action Plan will consider the following steps:

1. Complete building cleaning assessments by collecting facility and occupant information, and historical program strengths or weaknesses.
2. Create an inventory of custodial cleaning products and mechanical and non-mechanical equipment, and determine if they meet Green Cleaning standards.
3. Assess staff training and identify training needs and program resources available to support training. Determine how existing policies and procedures can be modified to utilize the wide range of Green Cleaning techniques and concurrently meet accepted levels of clean for specific areas of the facility.
4. Develop a plan with goals and strategies for cleaning procedures, Green Cleaning supplies, Green Cleaning equipment, and building facility enhancements (like expanded use and maintenance of walk-off mats at entrances). Benchmarks to guide the transition to Green Cleaning are critical due to training, product sourcing, and purchasing and staffing considerations.
5. Identify the Green Cleaning standards that will be used to purchase Green Cleaning equipment, non-mechanical equipment, and Green Cleaning custodial supplies. Possible standards include, but are not limited to:
 - a. Carpet and Rug Institute, Green Vacuum Cleaner Standards.



© Copyright 2017 • Strauss Esmey Associates, LLP • 1886 Hinds Road • Suite 1 • Tom's River, NJ 08753 - 8199 • 732-255-1500

POLICY GUIDE

PROPERTY
7461/page 6 of 9
District Sustainability Policy

- b. ISSA, Construction Industry Management Standard for Green Buildings that supports Leadership in Energy and Environmental Design (LEED) certification.
 - c. EcoLogo Certified products, services and packaging are certified for reduced environmental impact. ECOLOGO Certifications are voluntary, multi-attribute, lifecycle based environmental certifications that indicate a product has undergone rigorous scientific testing, exhaustive auditing, or both, to prove its compliance with stringent, third-party, environmental performance standards.
 - d. Environmental Protection Agency's (EPA's) Safer Choice label helps consumers, businesses, and institutional buyers identify cleaning products and others that perform well and are safer for human health and the environment.
 - e. Green Seal standard provides sustainability standards for products, services, and companies based on life-cycle research. Green Seal standards provide criteria and guidelines for manufacturers, service providers, and companies to work toward sustainability. Green Seal has 31 issued standards that cover over 375 product and service categories. Examples of Cleaning Products and Services include the GS-42 Commercial and Institutional Cleaning Services, GS-34 Cleaning and Degreasing Agents, GS-37 Green Cleaning Services, GS-40 Floor-Care Products for Industrial and Institutional Use, and GS-41 Hand Cleaners for Industrial and Institutional Use.
 - f. U.S. Green Building Council's Leadership in Energy & Environmental Design-Existing Buildings criteria; or ISSA Cleaning Industry Management Standard for Green Buildings.
 - g. Other standards that meet or exceed those listed above are also acceptable.
6. Green Cleaning Action plans may also incorporate implementation timeframes and program-monitoring requirements.



© Copyright 2017 • Strauss Esmay Associates, LLP • 1888 Hinds Road • Suite 1 • Toms River, NJ 08753 - 8199 • 732-255-1600

POLICY GUIDE

PROPERTY
7461/page 7 of 9
District Sustainability Policy

✓ Promoting Physical Activity

In addition to high-quality physical education classes in the school district taught by certified and well-supported physical education teachers, multiple opportunities exist before, during, and after school to enable young people to achieve the U.S. Department of Health and Human Services' recommended sixty minutes of physical activity per day. They include: recess, physical activity breaks, before and after school programs, and the use of school facilities outside school hours.

The Healthy, Hunger-Free Kids Act of 2010 requires every school district that participates in Federal school meals programs to have a local school Wellness Policy that includes goals for physical activity. The Board of Education has adopted Policy 8505 – Local Wellness Policy/Nutrient Standards for Meals and Other Foods to meet this requirement. The Board of Education promotes a comprehensive school-based physical activity program in accordance with Board policy that will permit students to safely walk to and from school, to ride bicycles to and from school, and some of the activities and programs listed below to promote physical activities:

1. Recess: The district will provide a recess period on most school days for Kindergarten through fifth grade students;
2. Physical Activity Breaks: Teachers may periodically conduct three to five minute "physical activity breaks" or "brain energizers" and incorporate physical activity into academic lessons to help improve student performance and on-task behavior;
3. Before and After School Programs: Elementary and Middle Schools in the district will attempt to offer a minimum of two types of extracurricular programs that provide students with opportunities for physical activity beyond school hours. A high school will offer additional extracurricular programs that provide students with opportunities for physical activity beyond school hours;
4. If the district offers a before and/or after school student care program for children, either directly or through a contractor, such programs shall incorporate physical activity as a component of the daily schedule;



© Copyright 2017 • Strauss Esmay Associates, LLP • 1886 Hinds Road • Suite 1 • Toms River, NJ 08753 - 8199 • 732-255-1500

POLICY GUIDE

PROPERTY
7461/page 8 of 9
District Sustainability Policy

5. Intramural sports, which are organized sports that often emphasize fun as well as competition and involve students from the school of all skill levels who may not want to participate in an interscholastic sport;
6. Physical activity clubs that allow students to pursue specific interests or explore new activities;
7. Use of School Facilities Outside School Hours: The district may, in accordance with Board Policy, allow for the joint use of school facilities by community recreation programs offered by municipal or parks and recreation commissions, outside agencies, and/or youth-serving organizations on evenings, weekends, and during breaks in the school calendar.

✓ Safe Routes to School

Safe Routes to School is a nationwide movement aimed at encouraging elementary and middle school students to walk or bicycle to school. The goal of New Jersey's Safe Routes to School initiative is to get children walking and bicycling to school where it is safe and to make it safe where it is not safe. In support of this initiative, the Board has adopted Policy 8505 – Local Wellness Policy/Nutrient Standards for Meals and Other Foods, Policy 8600 – Transportation, and Policy 5514 – Student Use of Vehicles. The Board of Education and the administration will collaborate with municipal, county or State transportation, land-use planning, law enforcement, and other agencies to plan, construct, and encourage the use of safe, accessible, and convenient pedestrian and bicycle routes to and from school.

The Board recognizes the benefits of students walking or riding a bicycle to school on a safe route. Understanding there may not be a safe walking or biking route to and from school for every student, this physical activity for a student is both mentally and physically beneficial.

Students walking and riding a bicycle to school will be required to comply with Board policies, all safety and school rules, and regulations. A list of conditions explaining the rules and expectations of the student and parent will be provided by the Principal or designee.]



POLICY GUIDE

PROPERTY
7461/page 9 of 9
District Sustainability Policy

The Board of Education will post this Policy on the school district website along with samples of the district's outreach activities to staff, students, and parents notifying them of the Policy adoption. Outreach activities/materials will include district newsletter articles, email blasts, presentations/announcements at Board of Education or district-wide staff meetings, and other public events.

Adopted:



© Copyright 2017 • Strauss Esmay Associates, LLP • 1888 Hinds Road • Suite 1 • Toms River, NJ 08753 - 8199 • 732-255-1600

